



COLLECTION 2024



**PARIS**  
**LYON**  
**LONDON**  
**NEW YORK**  
**MIAMI**  
**DUBAI**  
**BEIJING**  
**SHANGHAI**  
**HANGZHOU**  
**GUANGZHOU**  
**CHENGDU**  
**SEOUL**  
**SYDNEY**  
**JAKARTA**  
**CASABLANCA**  
**RABAT**  
**DAKAR**  
**BAMAKO**  
**ISTANBUL**  
**RIYADH**



## Maisondada.

Maison Dada, design editor since 2016, was created in Shanghai and in Paris by designer Thomas Dariel.

Maison Dada was born out of the wild dream to inject a dose of Dadaism into our everyday life. Maison Dada develops furniture, lighting, rugs and accessories with in mind the desire to create the unexpected from ordinary objects, the will to harmonize dreams and reality.

### DADA IS A STATE OF MIND

Collages, inventions, re-appropriations : Maison Dada creates objects that are gently crazy, defying certainty, taste and gravity. The style is poetic, bold, playful, daring and based on the belief that everybody deserves inspiring and meaningful design.

Maison Dada artistic direction is in the hands of Thomas Dariel who leads its creative potential through his own design pieces and the supervision of the overall design selection.

As a great grandson of a French furniture designer, grandson of a jazz musician and son of an architect, he has always drawn his strength and inspiration from his family heritage. French Designer by training and tireless traveler, he came to China in 2006 to launch his own interior design studio at the age of 24.

Dariel has since earned the praise of the interior design industry. He has received several awards, among them selection for Best Interior Designer – 2012 Andrew Martin Awards/ awarded AD 100 in Architecture and Design for AD Magazine in 2023, 2021, 2019, 2017, 2015 and 2017/ Top 40 Young Design Talents under 40 – 2013 Perspective 40 Under 40/ Top 10 Best Designer in China – Vantage Magazine 2016.

In 2017, Thomas Dariel has been elected Best Young Designer of the Year by EDIDA China Awards and Best Designer of the Year by Trends and Trends Home magazines.

Dariel draws his creativity from the different worlds of design, fashion, gastronomy, visual arts and luxury. His design philosophy is driven by his passion for breaking traditional codes and clichés which creates a new language for each design. By confronting heritage and cutting-edge innovations, combining French design heritage with Eastern cultural influence, Thomas Dariel's open approach unfolds original perspectives.

In 2021, some of his design have entered the very prestigious French Mobilier National, writing history of the French creation.

In 2022, Thomas Dariel was awarded by Le FRENCH DESIGN 100 for his projects at Dariel Studio and Maison Dada. That same year, Maison Dada was awarded the Ideat Award for "Best Young Editor of the Year".

In 2023, Thomas Dariel is also leading the ambitious project of Campus MaNa, a Design and Crafts International Campus located in French Burgundy where Design & Crafts workshops will be interacting with Design & Crafts Training at the highest level.



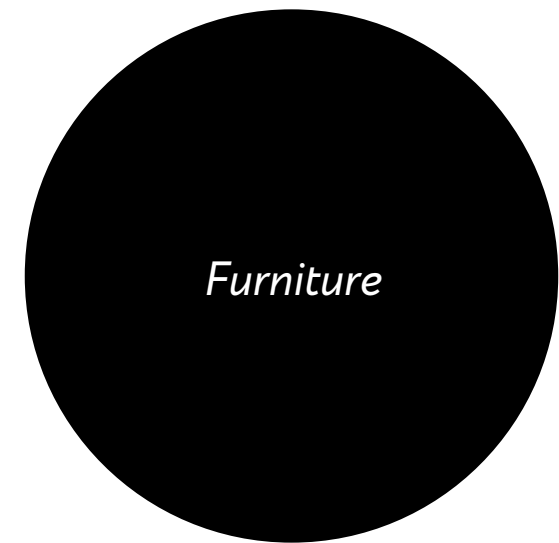
FOUNDER & ARTISTIC DIRECTOR **THOMAS DARIEL**





COLLECTION 2024

20  
24



## *Furniture*



## *Dame de coeur*



### DAME DE COEUR

Little Armchair • W56 \* D58.5 \* H80 cm

Wood frame

Memory foam

Base and seating fully upholstered in fabric

Selected fabric by the designer:

Category L: Kvadrat - Gentle

Category A: Kvadrat - Razzle dazzle, Uniform melange, Mizmaze

Category B: Kvadrat - Divina, Harald

Category C: Jab - Pure love, Club, Chill, City velvet





## *Furniture*



## *Dame de coeur*



### DAME DE COEUR

Dining Chair • W56 \* D58.5 \* H80 cm

Upper part wood frame with foam and fabric  
Lower part in metal with red painted

Selected fabric by the designer:

Category L: Kvadrat - Gentle

Category A: Kvadrat - Razzle dazzle, Uniform melange, Mizmaze

Category B: Kvadrat - Divina, Harald

Category C: Jab - Pure love, Club, Chill, City velvet

*New.*



## Furniture

## Lov Lov



LOV LOV  
Design by Claudio Colucci

Stool • W39.5" D39.5" H 54.7cm

Plywood with foam and vegan leather • fully upholstered  
Over 20 vegan leather colours available

New.

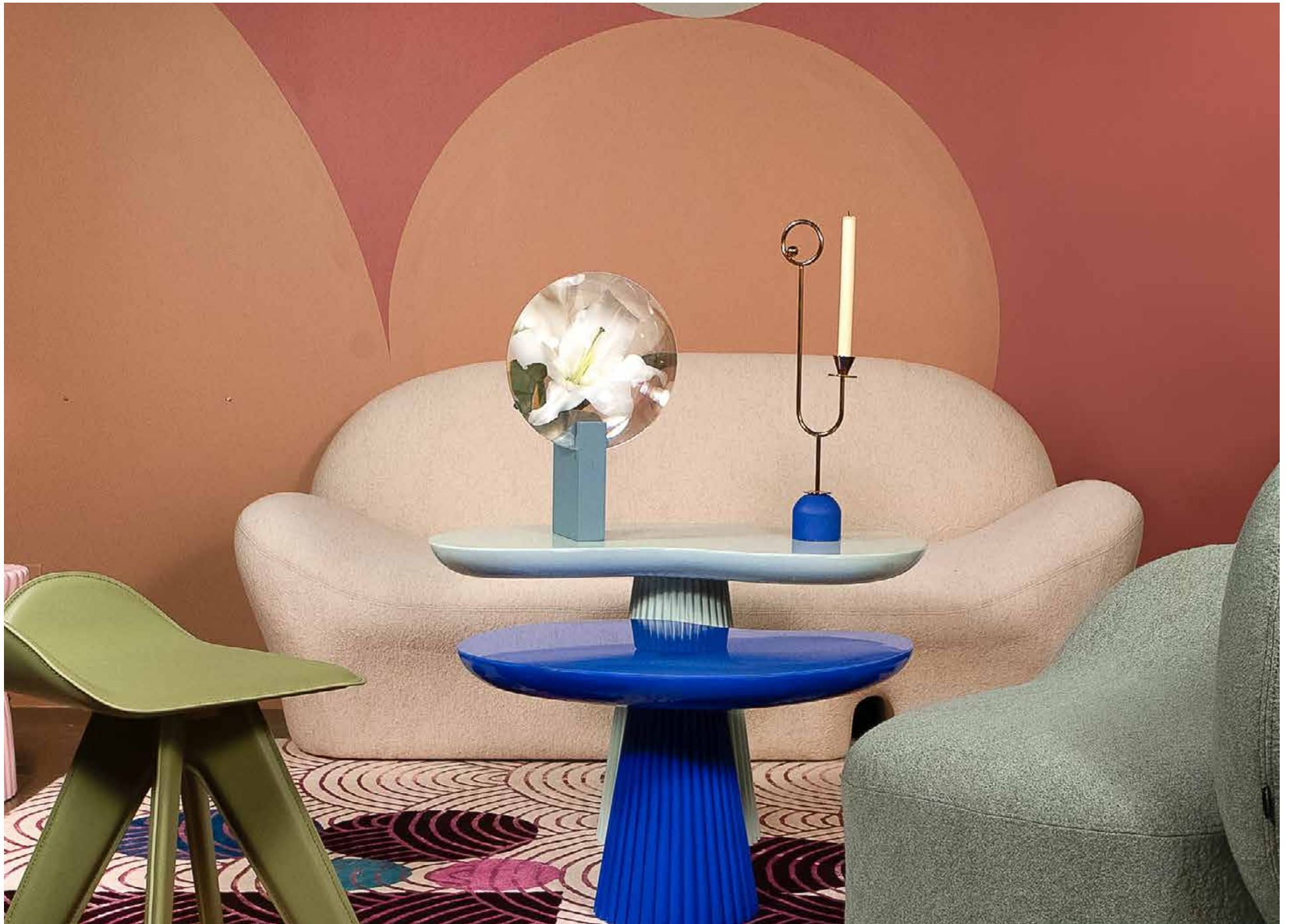


**Furniture**

**Lov Lov**







Furniture



*Mokuton*



*New.*

MOKUTON  
Design by Thomas Dariel

Dining Chair • W39 \* D49 \* H77 cm

Plywood with veneer (Oak, walnut, black)

Structure in wood •

Over 15 wood painted colours available, selected by the designer

## *Furniture*



*New.*

## *Sapiens*



### **SAPIENS** Design by Thomas Dariel

Armchair • W80 \* D52 \* H82 cm

Structure in solid timber and plywood  
Memory foam  
Base and seating fully upholstered in fabric

Selected fabric by the designer:  
Category L: Kvadrat - Gentle  
Category A: Kvadrat - Arda, Uniform melange / Jab - Balani  
Category B: Gabriel - Contour / Jab - Club



## Furniture



### SAPIENS

Sofa two-seats • W200 \* D62 \* H90 cm

Sofa three-seats • W255 \* D62 \* H90 cm

Structure in solid timber and plywood

Memory foam

Base and seating fully upholstered in fabric

Selected fabric by the designer:

Category L: Kvadrat - Gentle

Category A: Kvadrat - Arda, Uniform melange / Jab - Balani

Category B: Gabriel - Contour / Jab - Club

*New.*



## *Furniture*



*New.*

## *Fang Fang Fang*



### FANG FANG FANG

Armchair • W69\* D60 \* H80.5 cm

Wood frame with foam and fabric • fully upholstered

Selected fabric by the designer:

Category L: Kvadrat - Sisu

Category A: Kvadrat - Divina, Harald

Category B: Jab - Pure love, Club, City velvet

*Furniture*



*Jules*



## JULES

Design by Sarah Willemart

Stand Valet • W65 \* D53 \* H140 cm

Base in solid wood with oak veneer  
Structure in metal with oak veneer  
Backrest fully upholstered with fabric

Selected fabric by the designer:  
Category L: Lelièvre - Baltik, Grana  
Category A: Kvadrat - Divina  
Category B: Jab - Paris, Chill, Corby, Louie





## *Furniture*



## *Onna*



### ONNA

Armchair • W96 \* D80 \* H78 cm

Structure in solid timber and plywood

Memory foam

Seating fully upholstered in fabric

Swivel armchair

Selected fabric by the designer:

Category L: Kvadrat - Gentle

Category A: Kvadrat - Sprinkles

Category B: Kvadrat - Mizmaze, Divina

Category C: Jab - Pure love, Club, Chill, Hug me



*Furniture*



*Onna - Armchair*



*Furniture*



*Onna*



## ONNA

Sofa three-seats • W236 \* D80 \* H78 cm

Structure in solid timber and plywood  
Memory foam  
Seating fully upholstered in fabric

Selected fabric by the designer:

Category L: Kvadrat - Gentle

Category A: Kvadrat - Sprinkles

Category B: Kvadrat - Mizmaze, Divina

Category C: Jab - Pure love, Club, Chill, Hug me



## *Furniture*



## *Sumo*



### SUMO

Armchair • W113 \* D80 \* H80 cm / SH45 cm / SD63 cm

Structure in solid timber and plywood

Memory foam

Legs and seating fully upholstered in fabric

Selected fabric by the designer:

Category L: Kvadrat - Gentle

Category A: Kvadrat - Razzle dazzle, Uniform melange / Jab - Balani

Category B: Gabriel - Contour / Jab - Club

## *Furniture*



## *Sumo*



### SUMO

Sofa • W185 \* D80 \* H80 cm / SH45 cm

Structure in solid timber and plywood

Memory foam

Legs and seating fully upholstered in fabric

Selected fabric by the designer:

Category L: Kvadrat - Gentle

Category A: Kvadrat - Razzle dazzle, Uniform melange / Jab - Balani

Category B: Gabriel - Contour / Jab - Club



## *Furniture*



## *Major Tom*



### MAJOR TOM

Armchair • W101 \* D87 \* H87 cm / SH43 cm / SD58 cm

Structure in solid timber and plywood  
Memory foam  
Base and seating fully upholstered in fabric

Selected fabric by the designer:

Category L: Kvadrat - Gentle

Category A: Kvadrat - Razzle dazzle, Uniform melange, Mizmaze

Category B: Jab - Club, Chill

## *Furniture*



## *Major Tom*



### MAJOR TOM

Ottoman • W80 \* D80 \* H42 cm

Structure in solid timber and plywood

Memory foam

Base and seating fully upholstered in fabric

Selected fabric by the designer:

Category L: Kvadrat - Gentle

Category A: Kvadrat - Razzle dazzle, Uniform melange, Mizmaze

Category B: Jab - Club, Chill

## *Furniture*



## *Major Tom*



### MAJOR TOM

Sofa two-seats • W174 \* D87 \* H87 cm / SH43 cm / SD58 cm

Structure in solid timber and plywood

Memory foam

Base and seating fully upholstered in fabric

Selected fabric by the designer:

Category L: Kvadrat - Gentle

Category A: Kvadrat - Razzle dazzle, Uniform melange, Mizmaze

Category B: Jab - Club, Chill

Furniture

## Major Tom



### MAJOR TOM

Sofa three-seats • W240 \* D87 \* H87 cm / SH43 cm / SD58 cm

Structure in solid timber and plywood

Memory foam

Base and seating fully upholstered in fabric

Selected fabric by the designer:

Category L: Kvadrat - Gentle

Category A: Kvadrat - Razzle dazzle, Uniform melange, Mizmaze

Category B: Jab - Club, Chill





## Furniture

## Yiban Yiban



### YIBAN YIBAN

Armchair • W81.2 \* D66 \* H90 cm / SH45 cm / SD 57 cm

Structure in solid timber and plywood

Memory foam

Base and seating fully upholstered in fabric

Legs in plated metal with glossy champagne finish or legs in solid walnut colour finish

Selected fabric by the designer:

Category A: Face A (interior) in Kvadrat Harald / Face B (exterior) in Kvadrat Razzle Dazzle

Category B: Face A (interior) in Jab Collina / Face B (exterior) in Jab Woolly or Club

or face A (interior) in Jab velvet (Pure love or First or City velvet) / Face B (exterior) in Paris or Chill



## Furniture



## Ayi



### AYI

Armchair • W71 \* D79.5 \* H105 / SH45 cm / SD54 cm

Structure in solid timber and plywood

Memory foam

Base and seating fully upholstered in fabric

Metal base with legs in plated metal with glossy champagne finish or legs in solid walnut colour finish

Selected fabric by the designer:

Category L: Lelièvre - Baltik, Grana

Category A: Kvadrat - Divina

Category B: Jab - Paris, Chill, Corby

Category C: Jab - Louie

## *Furniture*



## *Du Roy*



### DU ROY

Stool • Dia41.2 \* H45 cm

Ceramic in glossy  
Black, Blue or Pink glaze finish



## Furniture



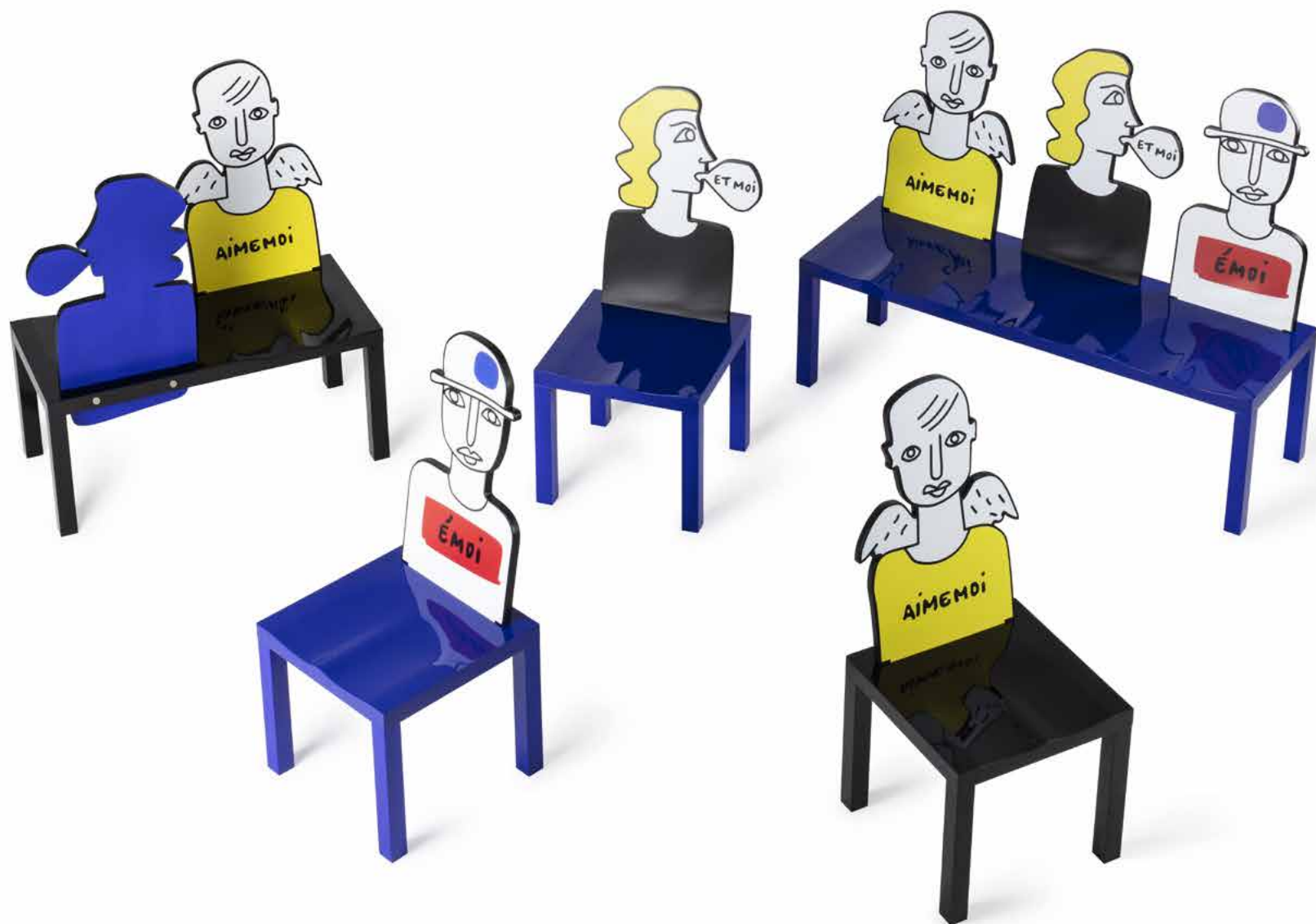
## Mise En Seine Collection



### HUMAN CHAIR Design by Jean-Charles de Castelbajac

Dining Chair • W50 \* D57\*H114 cm

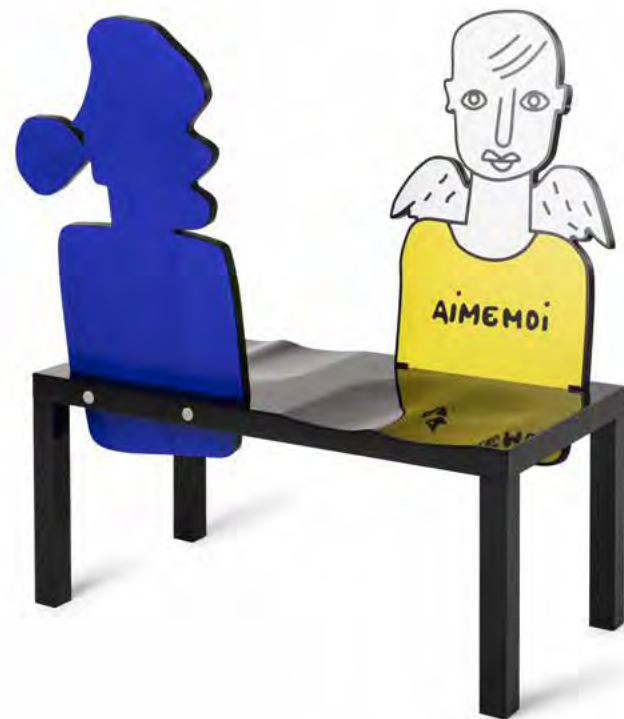
Base in wood and glossy paint finish  
Backrest in wood with screenprinting drawings  
Black or blue  
3 drawings of backrest



## Furniture



## Mise En Seine Collection

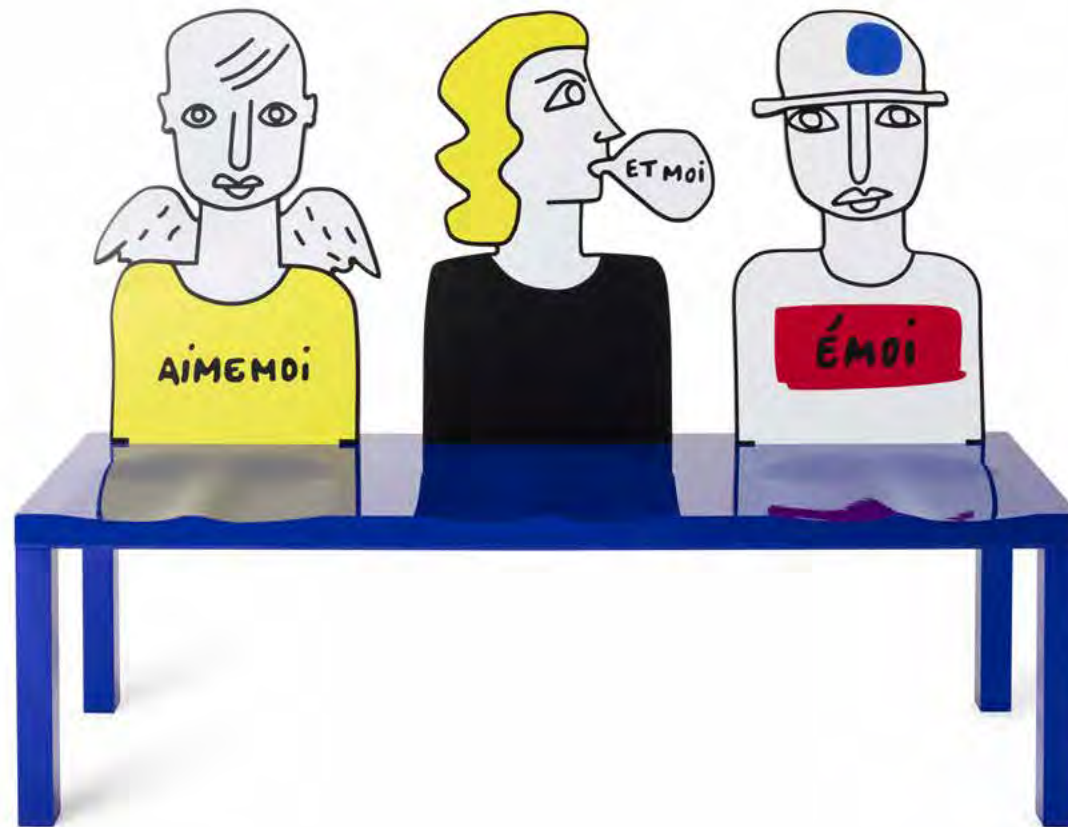


### HUMAN CONVERSATION Design by Jean-Charles de Castelbajac

Conversation Chair • W100 \* D64\*H114 cm

Base in wood and glossy black paint finish  
Backrest in wood with screenprinting drawings





**HUMAN BENCH**  
Design by Jean-Charles de Castelbajac

Bench • W150 \* D57\*H114 cm

Base in wood and glossy blue paint finish  
Backrest in wood with screenprinting drawings

*Furniture*



*Rose Sélavy*



## ROSE SÉLAVY - MARQUETRY

Vanity Desk • W93.5 \* D62 \* H138.6 cm

Stool • W57 \* D46 \* H64 cm

Desktop in colour-painted multiple veneers

Structure in MDF • Metal legs with painted ash veneer

Fixed accessory compartments in MDF with matte painted african ebony veneer

Stool structure in painted solid wood • seating upholstered in nature

leather • Metal parts plated with Champagne colour finish

Central Mirror • clear mirror

Side Mirror • one side clear, one side magnifying

## Furniture



## Rose Sélavy



## ROSE SÉLAVY

Vanity Desk • W93.5" D62" H138.6 cm

Stool • W57" D46" H64 cm / SH44 cm

Desktop in painted ash veneer • fronts in matte paint finish

Structure in MDF • Metal legs with matte painted ash veneer

Fixed accessory compartments in MDF with matte painted ash veneer

Stool structure in painted solid wood • seating upholstered in leather

Metal parts plated with Champagne colour finish

Central Mirror • clear mirror

Side Mirror • one side clear, one side magnifying

Colours : Green Celadon, Petrol Blue, Light Pink







*Rose Sélavy*



## ROSE SÉLAVY - MARQUETRY

Wall Console • W130 / 160 \* D34 \* H110.8 cm

Structure in MDF coated with painted multiple veneers

Fronts in matte paint finish

Metal legs with painted ash veneer • metal tip

Fixed accessory compartments in MDF coated with ash veneer & african ebony veneer

Furniture



*Rose Sélavy*



## ROSE SÉLAVY

Wall Console • W130 / 160 \* D34 \* H110.8 cm

Structure in Structure in MDF coated with painted ash veneer

Fronts in matte paint finish

Metal legs with painted ash veneer • metal tip

Fixed accessory compartments in MDF coated with ash veneer & solid wood paint finish

Colours : Petrol Blue, Green Celadon, Light Pink



## *Furniture*



## *Sonia et Caetera*



**M2**



**M1**

### SONIA ET CÆTERA - MARQUETRY

Coffee Table • M1 & M2 • Dia100 \* H37 cm

Coffee Table • M1 & M2 • Dia115 \* H37 cm

Table top in MDF with multiple veneers, feet in solid birch with painted glossy finish

## *Furniture*

## *Sonia et Caetera*



**M1**



**M2**

### SONIA ET CÆTERA - MARQUETRY

Dining Table • M1 & M2 Dia100 \* H73 cm

Dining Table • M1 & M2 Dia115 \* H73 cm

Dining Table • M1 & M2 Dia130 \* H73 cm

Base in solid wood painted in matte colour finish

Table top in MDF with multiple veneers

## *Furniture*



## *Sonia et Cætera*



## SONIA ET CÆTERA

Dining table three circles • W236 \* D106.3 \* H74 cm  
Base in solid wood painted in matte colour finish  
Printed laminate top in MDF

Dining table one circle • Dia100 or Dia115 \* H74 cm  
Base in solid wood painted in matte colour finish  
Printed laminate top in MDF





## Furniture



## Confidence of a Cloud



### CONFIDENCE OF A CLOUD

Writing Desk • W120 \* D43 \* H147cm

Structure in MDF with colour-painted ash veneer  
 Fronts and back in matte or glossy paint finish  
 Inside compartments in matte paint finish  
 One compartment with image of a cloud  
 Metal legs in painted ash veneer

Colours combinations:

Orange Flamingo / Green Jungle, Celadon / Dorian Grey or Black / Celadon





## Furniture



## My Confidant



### MY CONFIDANT

Desk • W140 \* D78.5 \* H103 cm

Desktop in painted ash veneer • fronts in matte paint finish  
Structure in MDF • Metal legs with painted ash veneer  
Fixed accessory compartments in painted ash veneer

Colours : Petrol Blue, Forest Green, Natural Wood

## *Furniture*



## *Yin & Yang*



### YIN & YANG

Cabinet • W80 \* D47 \* H93.2 cm

Body in painted and natural ash veneer • front in matte paint finish  
Structure in MDF • Inside drawers painted in black matte finish  
Metal legs with black powder coat finish • handle in solid wood

Available in 2 versions:

Natural colour patterns with Black body (Yang)  
Black patterns with natural colour body (Yin)



**" The man  
who cannot  
visualize  
a horse  
galloping on  
a tomato is  
an idiot. "**

*André Breton*



*Furniture*



*Möbius*



**MÖBIUS**  
Design by After Hours

Side Table • W39\*Dia35\*H64cm

Tray made of colored metal with a matte finish (in blue, red, and green).  
Legs crafted from wood with a glossy paint finish (in blue, red, and green).

*New.*

## Furniture



## Mira



*n°1 - Forest Green*



*n°3 - Black*



*n°2 - Red*

## MIRA

Coffee Table N°1 : W85 \* D49 \* H53 cm

Table top in MDF • Base in solid birch • base and top in glossy Forest Green paint finish

Coffee Table N°2 : W87 \* D55 \* H40 cm

Table top in MDF • Base in solid birch • base and top in glossy Red paint finish

Coffee Table N°3 : W68 \* D56 \* H40 cm

Table top in MDF • Base in solid birch • base and top in glossy Black paint finish

## *Furniture*



## *Mira*



*n°3 - Blue*

*n°1 - Celadon*

*n°2 - Yellow*

## MIRA

Coffee Table N°1 : W85 \* D49 \* H53 cm

Table top in MDF • Base in solid birch • base and top in glossy Celadon paint finish

Coffee Table N°2 : W87 \* D55 \* H40 cm

Table top in MDF • Base in solid birch • base and top in glossy Yellow paint finish

Coffee Table N°3 : W68 \* D56 \* H40 cm

Table top in MDF • Base in solid birch • base and top in glossy Blue paint finish



## Furniture



## Ousmane



n°2



n°1

## OUSMANE

Side table n°1 • Dia 50 \* H50 cm  
Ceramic in Canard Green colour glaze, matte finish

Side table n°2 • Dia 50 \* H50 cm  
Ceramic in Tan colour glaze, matte finish

## *Furniture*



## *Stand by Me*



Right



Left



## STAND BY ME

Side table • W38 \* D36.6\* H55 cm

Structure in MDF with painted ash veneer  
Metal base plated with glossy Pink Copper finish  
Handle knob in plated metal with glossy Pink Copper finish

Colours : Green Celadon, Blue Indigo, Light Pink, Wood  
and 2 versions (Left or Right)





*Furniture*



*Off the Moon*



OFF THE MOON

Side table n°3 • Dia35 \* H79.6 cm

Plated metal coated with glossy Champagne finish  
Base and handle in plated metal coated with glossy Champagne finish

*Furniture*



*Off the Moon*

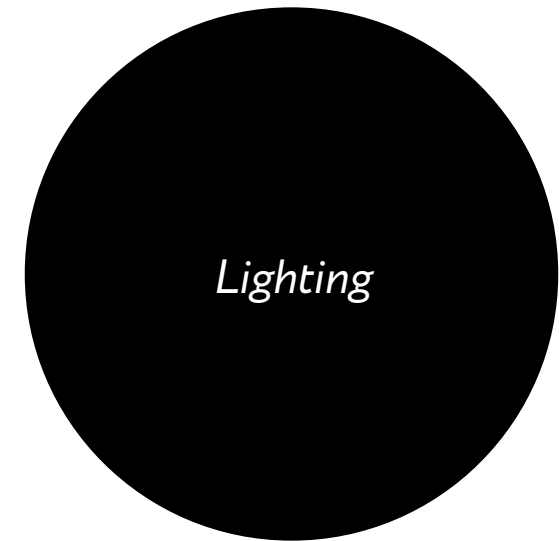
*New.*



## OFF THE MOON

Side table • Dia40 \* H81.5 cm

Tray in coloured ash veneer painted in matte (Black, Blue, Pink, Burgundy)  
Base and handle in plated metal coated with glossy Champagne finish





## *Lighting*

## *Dali Divina*



### DALI DIVINA

Table lamp • Dia31.5 \* H43 cm

Powder coated metal shade, base and framework  
Touch switch in colour finish  
220V - 240V 50Hz E27 max. 60W

Colours : Blue matte, Black glossy

*Lighting*



*Sachi Sacha*



## SACHI SACHA

Table Lamp • W28 \* D20 \* H65 cm

Base - Blue powder coated metal with matte finish  
Rotating Top - Blue powder coated metal / plated metal with glossy  
Copper finish  
Touch switch in plated metal coated with glossy Copper finish  
Globe in Opal Glass matte  
Cable L200 cm, 220V - 240V 50Hz G9, max 3W

## Lighting



## Sachi Sacha



### SACHI SACHA

Wall Lamp • W30.4 \* D27 \* H57.2 cm

Base and arm - Black powder coated metal with matte finish

Plated metal ball coated with glossy Copper finish

Rotating Top - Blue powder coated metal / plated metal with glossy Copper finish

Globe in Opal Glass, matte

220V - 240V 50Hz G9 max 3W



## Lighting



## P.E.A.C.E



## P.E.A.C.E

Table Lamp • Dia 44 \* H56 cm

Metal body with powder coated or plated metal colour finish

8 varied size globes in Opal Glass matte finish

Cable L200 cm, 220V - 240V 50Hz G9, max 3W

Colours : Black powder coating, plated metal in glossy copper finish

*Lighting*



*Little Eliah*



## LITTLE ELIAH

Table Lamp • Dia45 \* H55 cm

Tricoloured

Powder coated metal shade in matte white

Vibrant complementary tones on lampshade's interior and base

Colour cable

220V - 240V 50Hz E27 Max.60W

Colours combinations: Orange Flamingo / Green Peacock, Deep Blue / yellow

*Lighting*



*Little Eliah*



## LITTLE ELIAH

Pending Lamp • Dia45 \* H65 cm

Tricoloured

Powder coated metal shade in matte white

Vibrant complementary tones on lampshade's interior and base

Colour cable, adjustable cable height (max 2.4m)

220V - 240V 50Hz E27 Max. 60W

Colours combinations: Orange Flamingo / Green Peacock, Deep Blue / Yellow

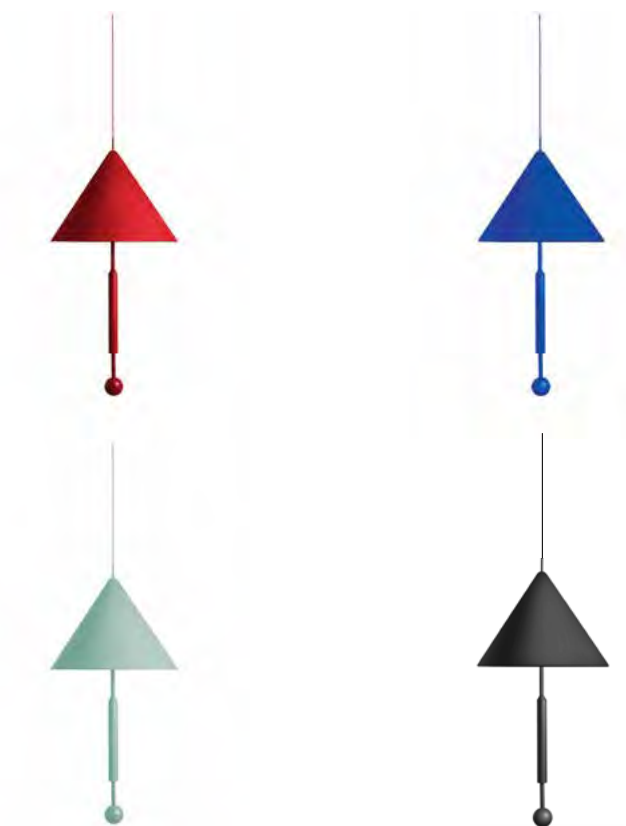




*Lighting*



*Object of Discussion*



## OBJECT OF DISCUSSION

Pending Lamp • Dia80 \* H163 cm

Fabric lampshade, powder coated metal base

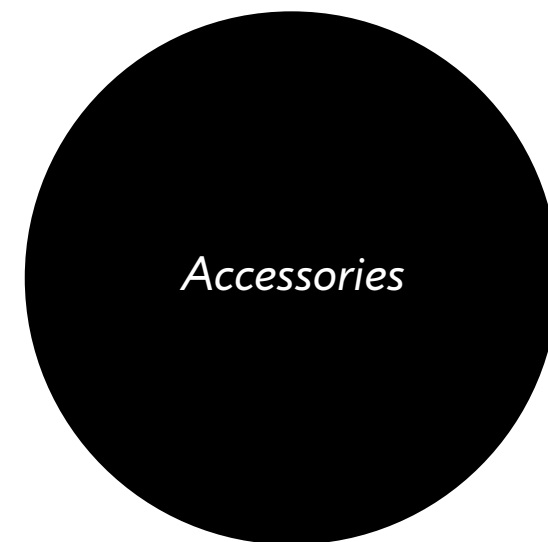
Monochromatic

Colour cable, adjustable cable height (max 2.4m)

220V - 240V 50Hz E27 Max. 60W

Colours : Celadon, Red, Black, Yellow Citrus, Blue





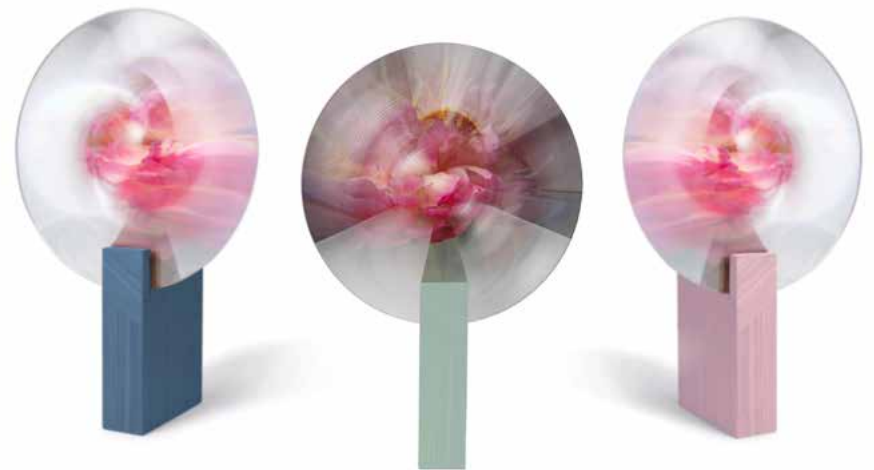
*Accessories*



## Accessories



## Narcisse



*New.*

### NARCISSE

Design by Najma Temsoury

Base • W30 \* D16.6 \* H45cm

Base: solid wood with veneer, stainless steel tube  
Lens in PMMA with dia 300

Base Colours : Blue, Céladon, Pink

## Accessories



## Narcisse



### NARCISSE Design by Najma Temsouri

Vase • W30 \* D16.6 \* H45cm

Base: solid wood with veneer, stainless steel tube  
Lens in PMMA with dia 300

Base Colours : Oak, Walnut, Black

## Accessories



## Margot - Vase



n°1



n°2



n°3

### MARGOT

Vase N°1 : W19.1 \* D15.8 \* H22.6cm

Vase N°2 : W17.8 \* D17.8 \* H22.6cm

Vase N°3 : W20.6 \* D16.5 \* H22.6cm

Upper part: stainless steel with veneer and color painting in red, sky blue or blue

Lower part: glass in blue, green or yellow

Colours combinations: Blue/Red, Green/Sky blue, Yellow/Blue

*New.*



## Accessories



## *This Is Not A Self Portrait*



### THIS IS NOT A SELF PORTRAIT - BUST

Bust • W26.5 \* D24 \* H63 cm  
Solid plaster sculpture wrapped in elastic band  
colour paint finish • accent ribbon

Colours : Nude & Burgundy

*New.*

## Accessories



## This Is Not A Self Portrait



### THIS IS NOT A SELF PORTRAIT - BUST

Bust • W26.5 \* D24 \* H63 cm  
Solid plaster sculpture wrapped in elastic band  
colour paint finish • accent ribbon

Colours : Blue, Green, Red, Yellow, Pink, Purple, Khaki, Brick  
Customized Colours Possible (under conditions)





## Accessories

## Morocco! collection



*Yallah*



*Chkoun*



*Chouf*

### MOROCCO!

Design by José Lévy

Mirror Yallah • W60 \* D3 \* H120 cm / W29 \* D3 \* H60 cm  
Support in MDF with glossy blue frame • Copper coloured mirror

Mirror Chkoun • W76 \* D3 \* H120 cm / W38 \* D3 \* H60 cm  
Support in MDF with glossy green frame • Copper coloured mirror

Mirror Chouf • W74 \* D3 \* H120 cm / W36 \* D3 \* H60 cm  
Support in MDF with glossy terracotta frame • Copper coloured mirror

## Accessories



## Morocco! Collection



### YALLAH

Design by José Lévy

Mirror W60 \* D3 \* H120 cm

Mirror W29 \* D3 \* H60 cm

Support in MDF with glossy celadon frame • Silver coloured mirror

## *Accessories*



## *Morocco! Collection*



### CHOUF - MIRROR

Design by José Lévy

Mirror W74 \* D3 \* H120 cm

Mirror W36 \* D3 \* H60 cm

Support in MDF with glossy yellow frame • Silver coloured mirror



## Accessories



## Morocco! Collection



### CHKOUN - MIRROR

Design by José Lévy

Mirror W76 \* D3 \* H120 cm

Mirror W38 \* D3 \* H60 cm

Support in MDF with glossy pink frame • Silver coloured mirror

## Accessories



## Paris Memphis



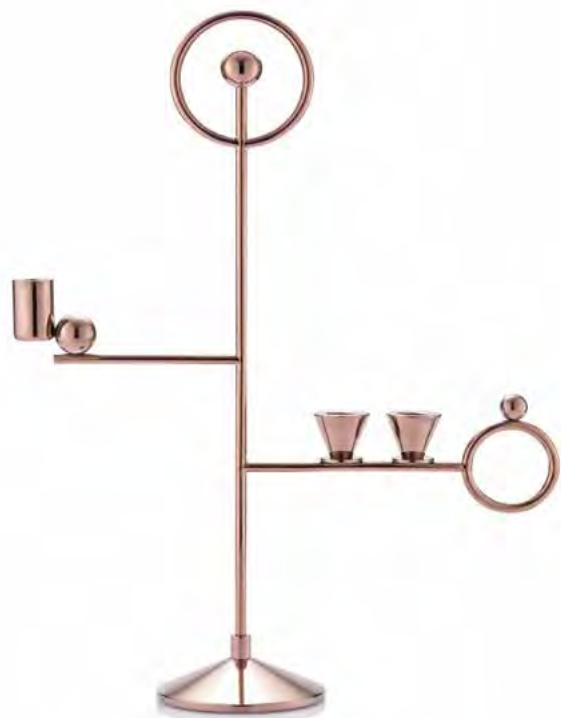
n°3 • n°4

### PARIS MEMPHIS N.3 & N.4

Candleholder n° 3 • W14.1 \* D8.5 \* H55 cm  
Plated metal coated with glossy Pink Copper finish  
Base in ash veneer painted in matte Dusty Pink, Yellow, Blue

Candleholder n° 4 • W14.2 \* D8.5 \* H50 cm  
Plated metal coated with glossy Pink Copper finish  
Base in ash veneer painted in matte Dusty Pink, Yellow, Blue

## *Accessories*



n°5

### PARIS MEMPHIS N.5

Candleholder n°5 • W39 \* D12 \* H50 cm  
Plated metal coated with glossy Pink Copper finish

## *Paris Memphis*



n°8

### PARIS MEMPHIS N.8

Candleholder n° 8 • W32.4 \* D12 \* H44.5 cm  
Plated metal coated with glossy Pink Copper finish

## Accessories



*n°1*



*n°2*

### LES IMMOBILES N.1 & N.2

Candleholder n°1 • W22 \* D27 \* H60 cm  
Base in black powder coated metal  
Parts in plated metal coated with glossy Copper finish

Candleholder n°2 • W19.5 \* D15.5 \* H60 cm  
Base in black powder coated metal  
Parts in plated metal coated with glossy Champagne finish

## Les Immobiles



*n°3*



*n°4*

### LES IMMOBILES N.3 & N.4

Candleholder n°3 • L44.3 \* W20.5 \* H48.2 cm  
Black, Blue and Red powder coated metal

Candleholder n°4 W43.4 \* D37.2 \* H61cm  
Black, Yellow, Blue and Red powder coated metal  
Mirrors in glossy silver metal



## Accessories



## Mademoiselle Georges



## MADemoisELLE GEORGES Decorative Boxes

Box n°1 • Dia13 \* H37 cm

Box n°2 • Dia13 \* H25 cm

Box n°3 • Dia16 \* H21 cm

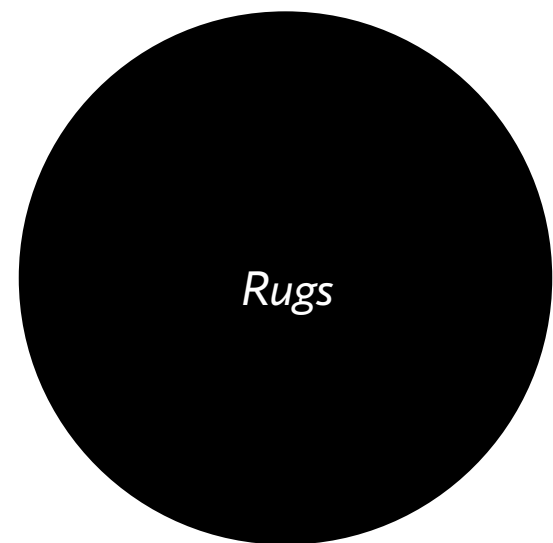
Box n°4 • Dia16 \* H34 cm

Material : Glossy glazed ceramic

Exterior - ceramic in glossy Celadon or Pink glaze finish

Interior - ceramic in glossy Pink or Celadon glaze finish







## *Japanese Abstractions Collection*



Japanese Abstractions is a collection of nine pieces, all designed around the concept of the imaginary trip to Japan of the Dadaist and feminist artist Sophie Taeuber Arp. Each rug is a combination of geometric shapes and traditional Japanese patterns, a result of the unexpected yet poetic encounter between pure abstraction and cultural influences, between West and East.

Rug n°1 • W200 \* D240 cm

Rug n°2 • W170 \* D240 cm

Rug n°3 • W240 \* D240 cm

Rug n°4 • W240 \* D240 cm

Rug n°5 • W170 \* D240 cm

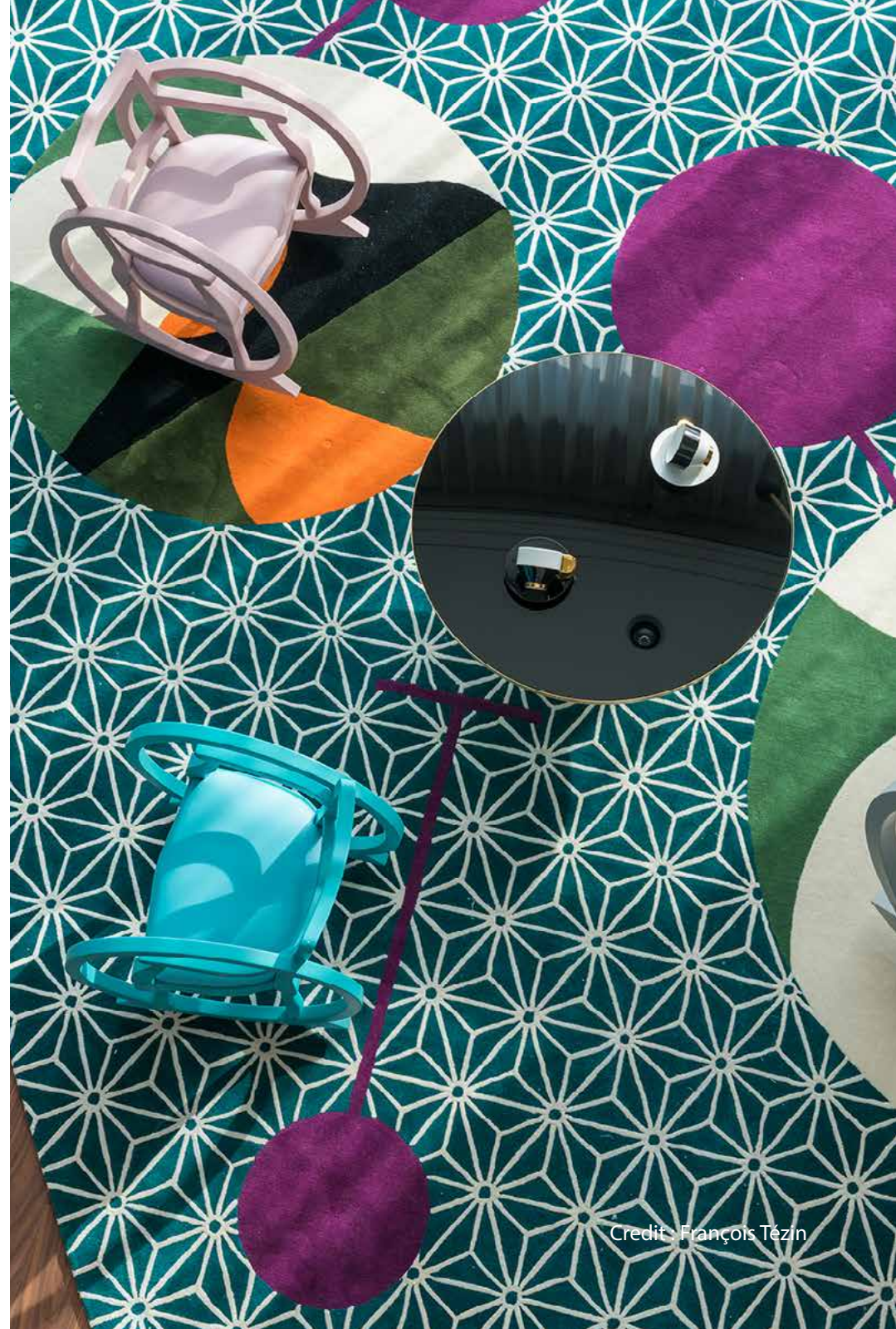
Rug n°6 • W170 \* D240 cm

Rug n°7 • W170 \* D240 cm

Rug n°8 • W170 \* D240 cm

Rug n°9 • W170 \* D240 cm

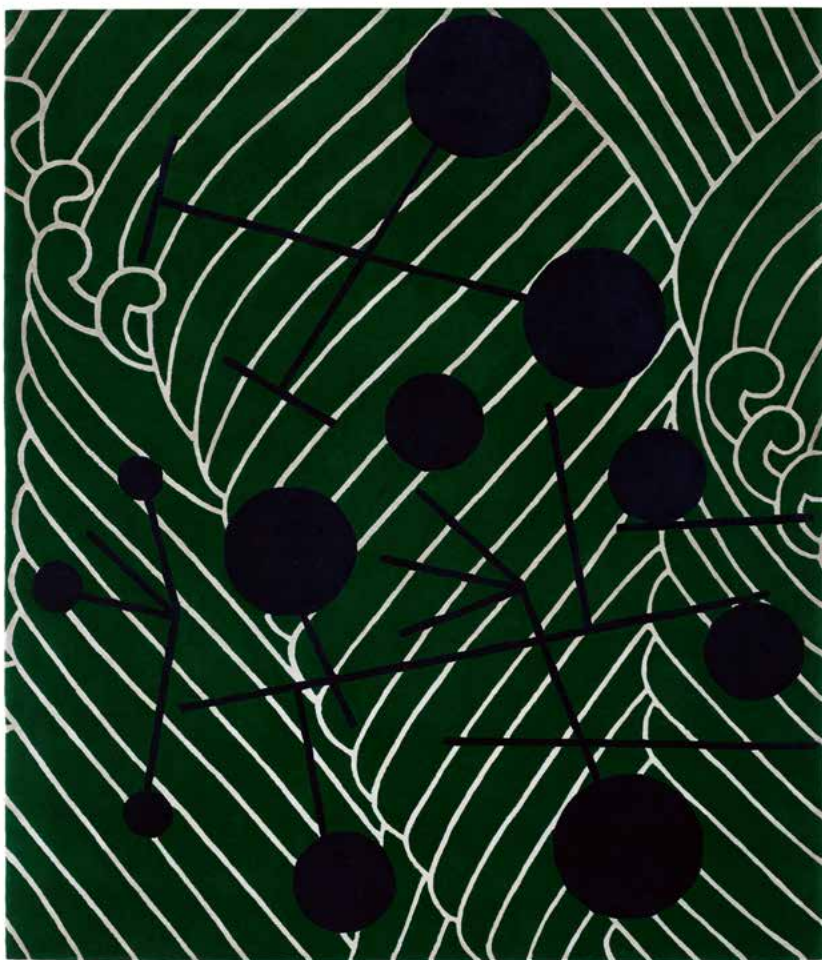
New-Zealand Wool and Tencel



Credit: François Tézin



*Japanese Abstractions Collection*



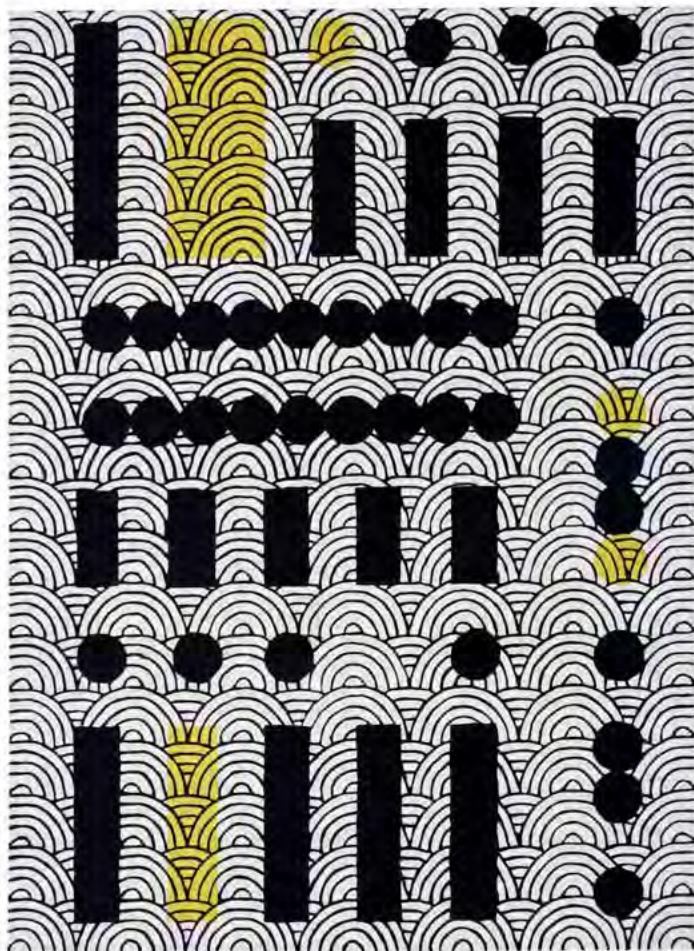
Rug Japanese Abstractions n°1

Rug n°1 • W200 \* D240 cm  
New-Zealand Wool and Tencel





*Japanese Abstractions Collection*



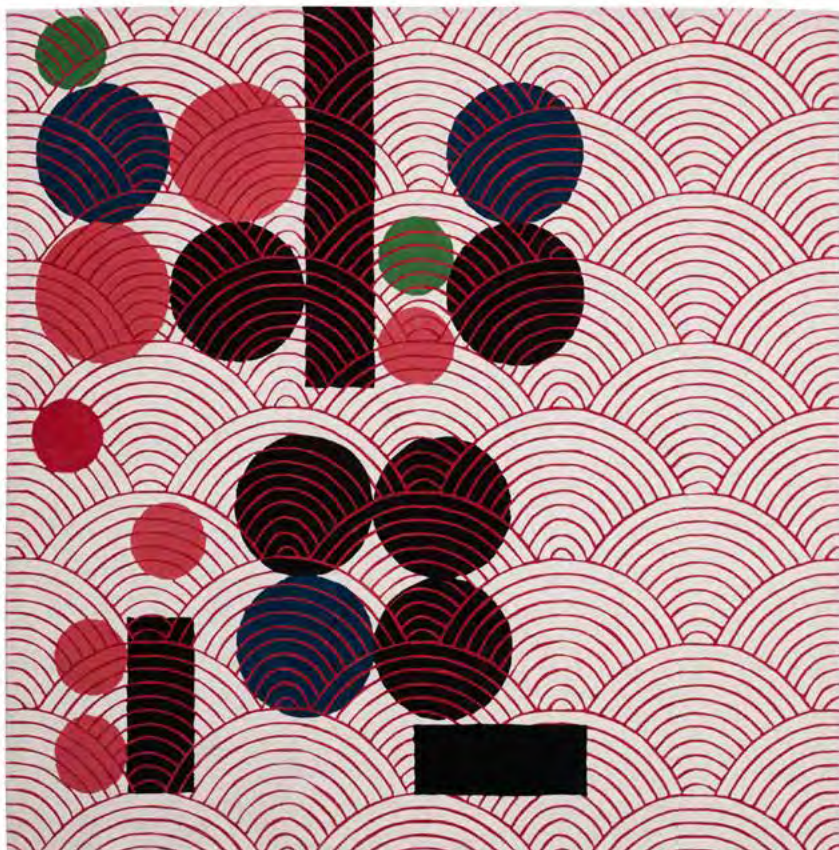
Rug Japanese Abstractions n°2

Rug n°2 • W170 \* D240 cm  
New-Zealand Wool and Tencel





*Japanese Abstractions Collection*



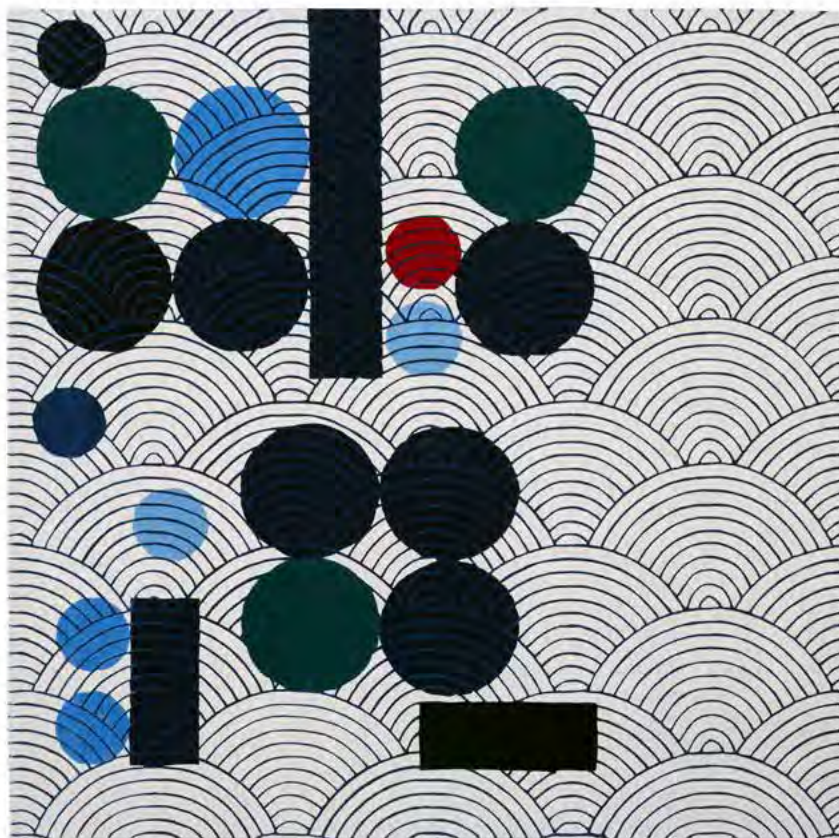
Rug Japanese Abstractions n°3

Rug n°3 • W240 \* D240 cm  
New-Zealand Wool and Tencel



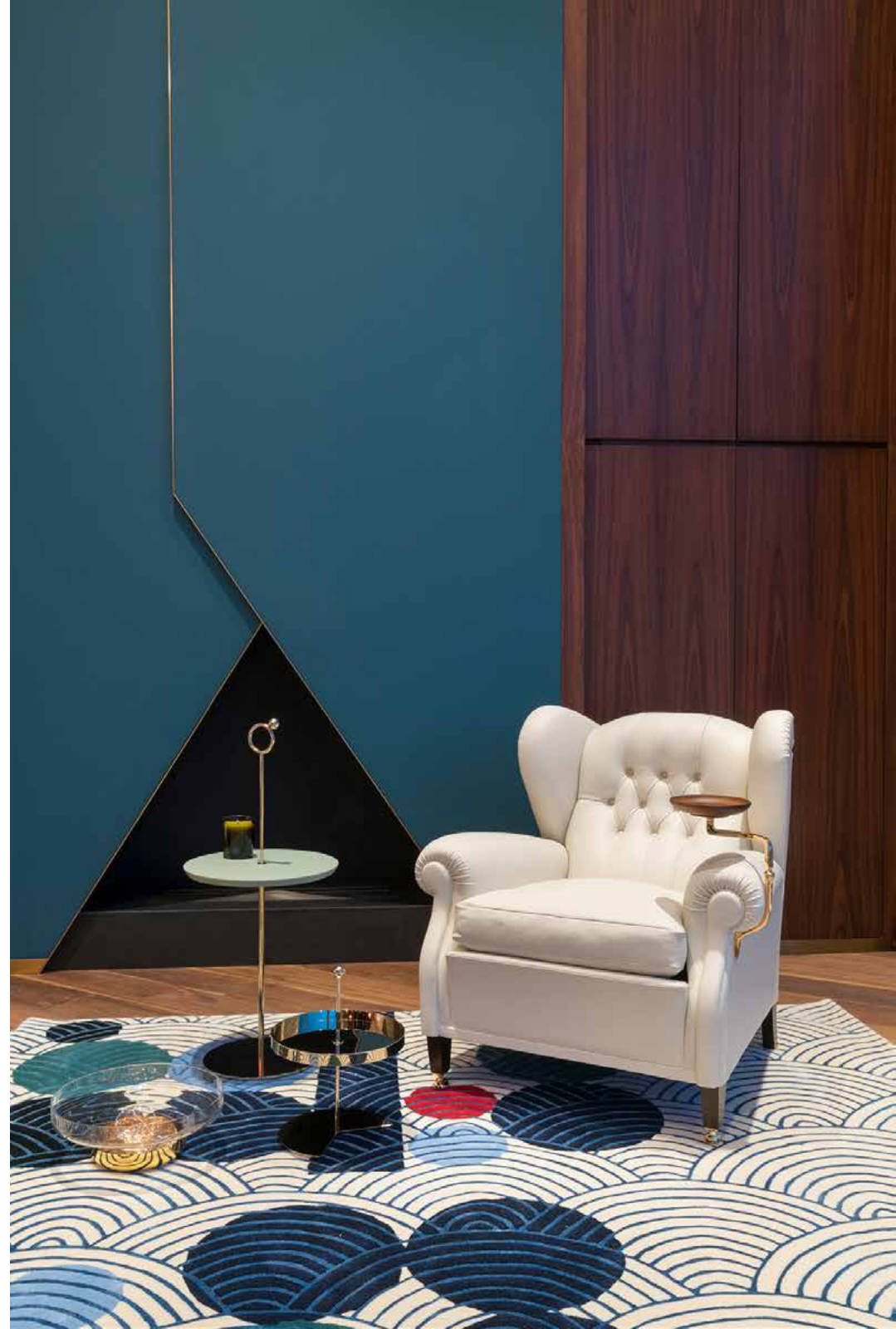


*Japanese Abstractions Collection*



Rug Japanese Abstractions n°4

Rug n°4 • W240 \* D240 cm  
New-Zealand Wool and Tencel





*Japanese Abstractions Collection*



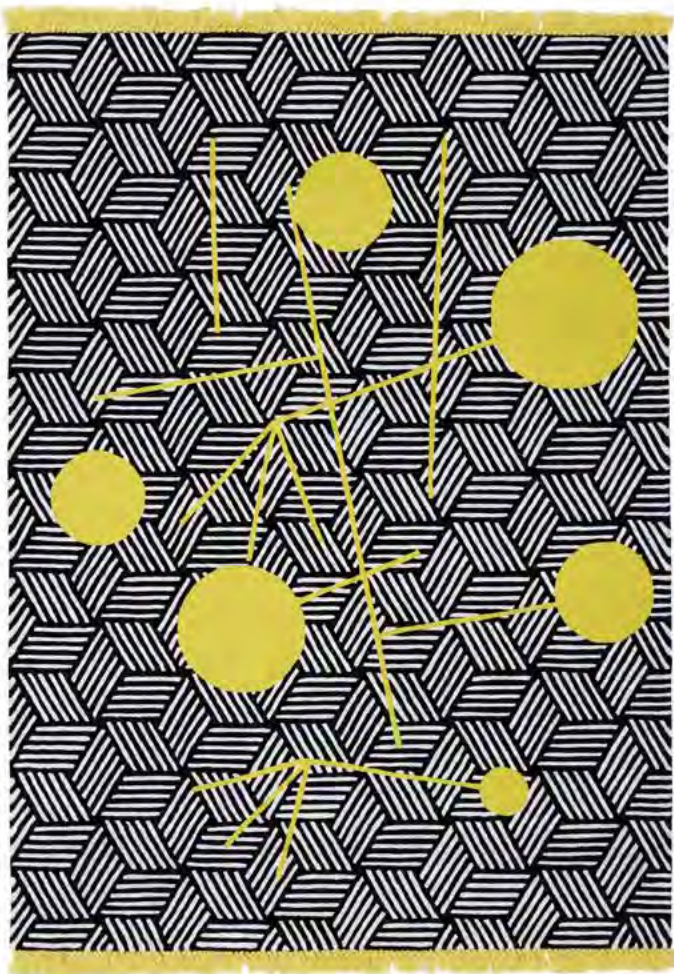
Rug Japanese Abstractions n°5

Rug n°5 • W170 \* D240 cm  
New-Zealand Wool and Tencel





*Japanese Abstractions Collection*



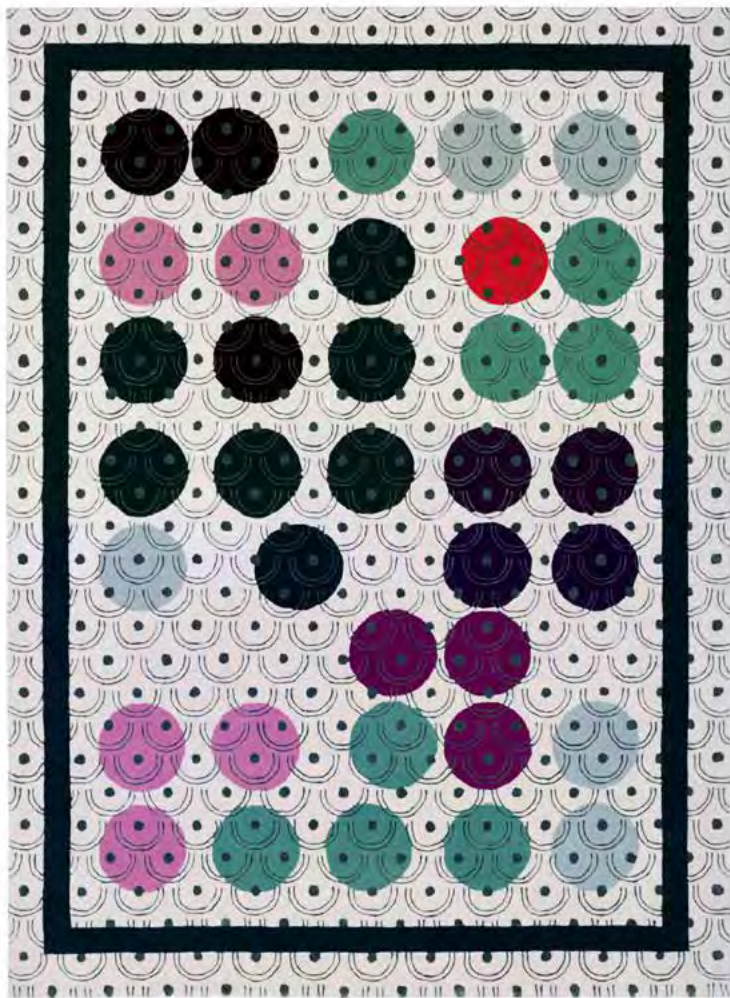
Rug Japanese Abstractions n°6

Rug n°6 • W170 \* D240 cm  
New-Zealand Wool and Tencel





## *Japanese Abstractions Collection*



Rug Japanese Abstractions n°7

Rug n°7 • W170 \* D240 cm  
New-Zealand Wool and Tencel





*Japanese Abstractions Collection*



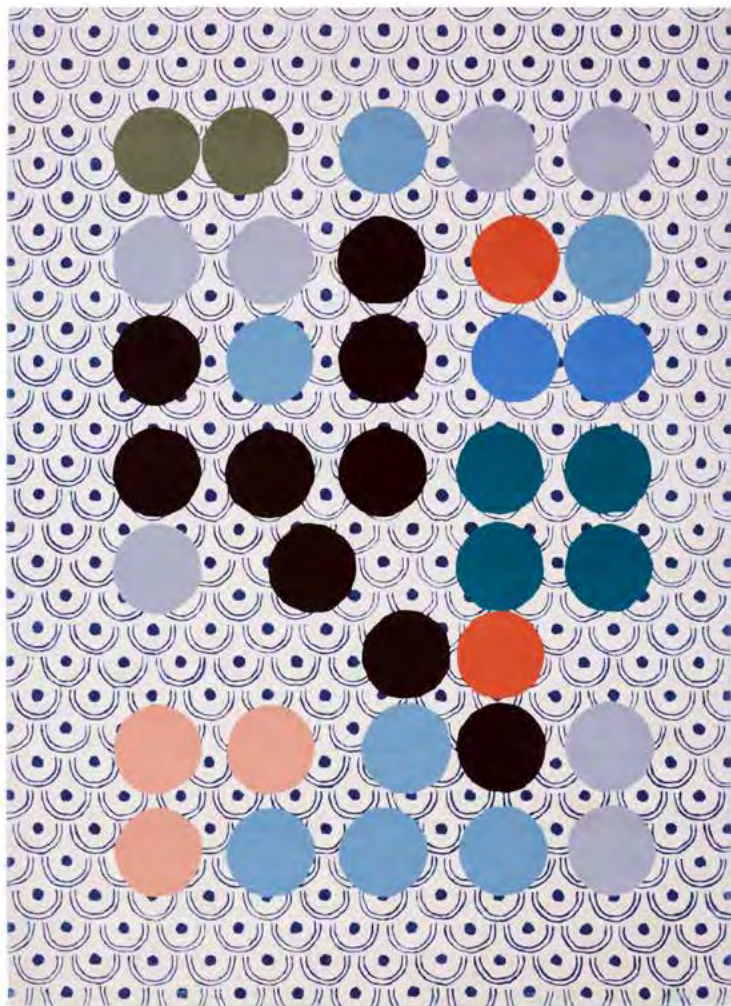
Rug Japanese Abstractions n°8

Rug n°8 • W170 \* D240 cm  
New-Zealand Wool and Tencel





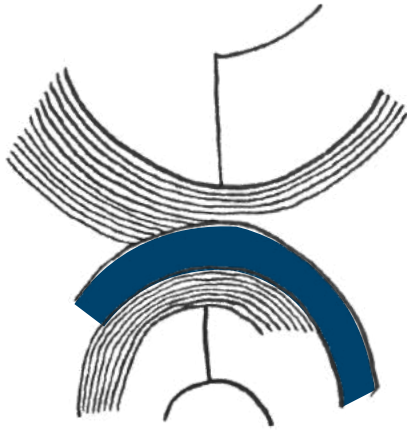
*Japanese Abstractions Collection*



Rug Japanese Abstractions n°9

Rug n°9 • W170 \* D240 cm  
New-Zealand Wool and Tencel





The South-Korea capital is known for its Thirty-one bridges spanning the vast Hangang River. The collection was born from this idea: the view one may have from the sky looking over Seoul, the graphic and natural patterns created by the river winding its way through the City and crossed by a multitude of bridges connecting both banks and their inhabitants. A cartographic reference that is also translated through the rugs' mix of materials and thickness variation, the fragility of the tencel lines contrasting with large wool geometrical tint areas.

Rug n°1 • W170 \* D240 cm

Rug n°2 • W170 \* D240 cm

Rug n°3 • W200 \* D240 cm

Rug n°4 • W240 \* D240 cm

New-Zealand Wool and Tencel

||  
The  
imaginary  
is what  
tends to  
become  
real.  
||



## *Seoul By Day Collection*



Seoul by Day n°1

Rug n°1 • W170 \* D240 cm  
New-Zealand Wool



*Seoul By Day Collection*



Seoul by Day n°2

Rug n°2 • W170 \* D240 cm  
New-Zealand Wool





*Seoul By Day Collection*



Seoul by Day n°3

Rug n°3 • W200 \* D240 cm  
New-Zealand Wool





*Seoul By Day Collection*

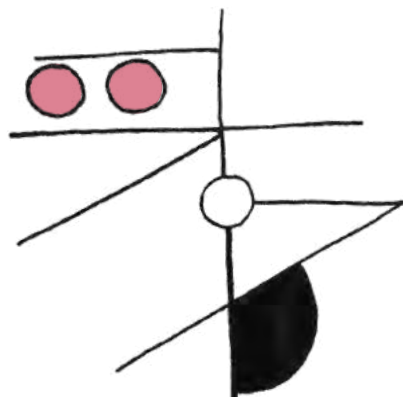


Seoul by Day n°4

Rug n°4 • W240 \* D240 cm  
New-Zealand Wool



## *Shanghai by Night Collection*



Vibration, perspective, energy, Shanghai By Night is an interpretation of what could define the gigantic City that is Shanghai. While geometrical shapes and pure lines empower the pieces with masculinity, pastel shades and roundness soothe this strength at first sight by bringing softness and poesy. As much as Shanghai and its everlasting contrasts, the rugs feature a combination of opposite elements, which, well balanced, finally lead to harmony.

Rug n°1 • W240 \* D240 cm

Rug n°2 • W170 \* D240 cm

Rug n°3 • W170 \* D240 cm

New-Zealand Wool





*Shanghai by Night Collection*



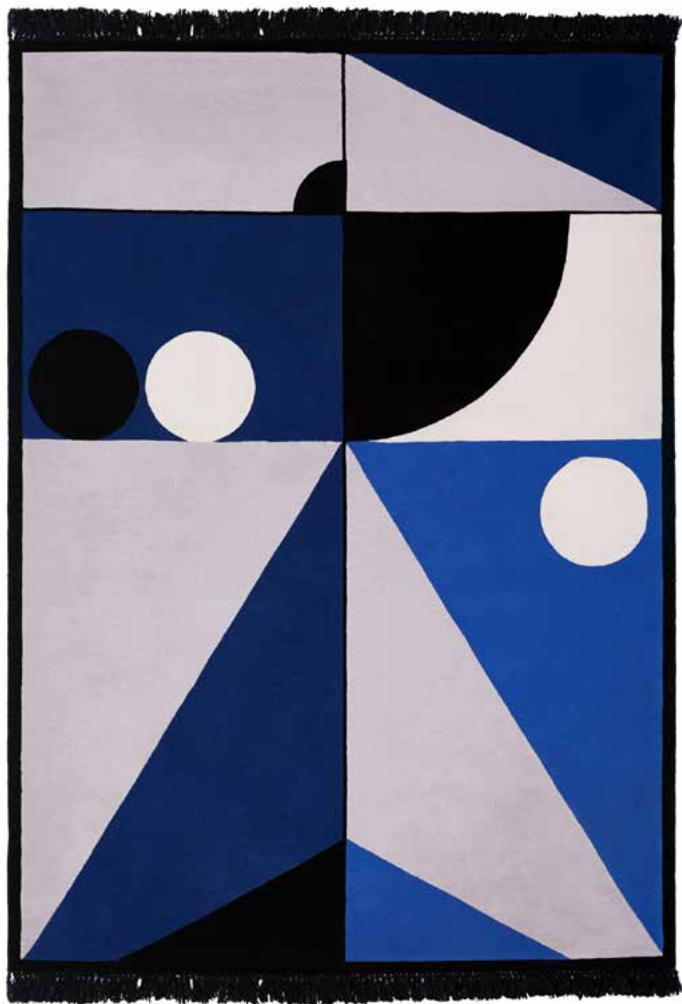
*Shanghai by Night n°1*

Rug n°1 • W240 \* D240 cm  
New-Zealand Wool



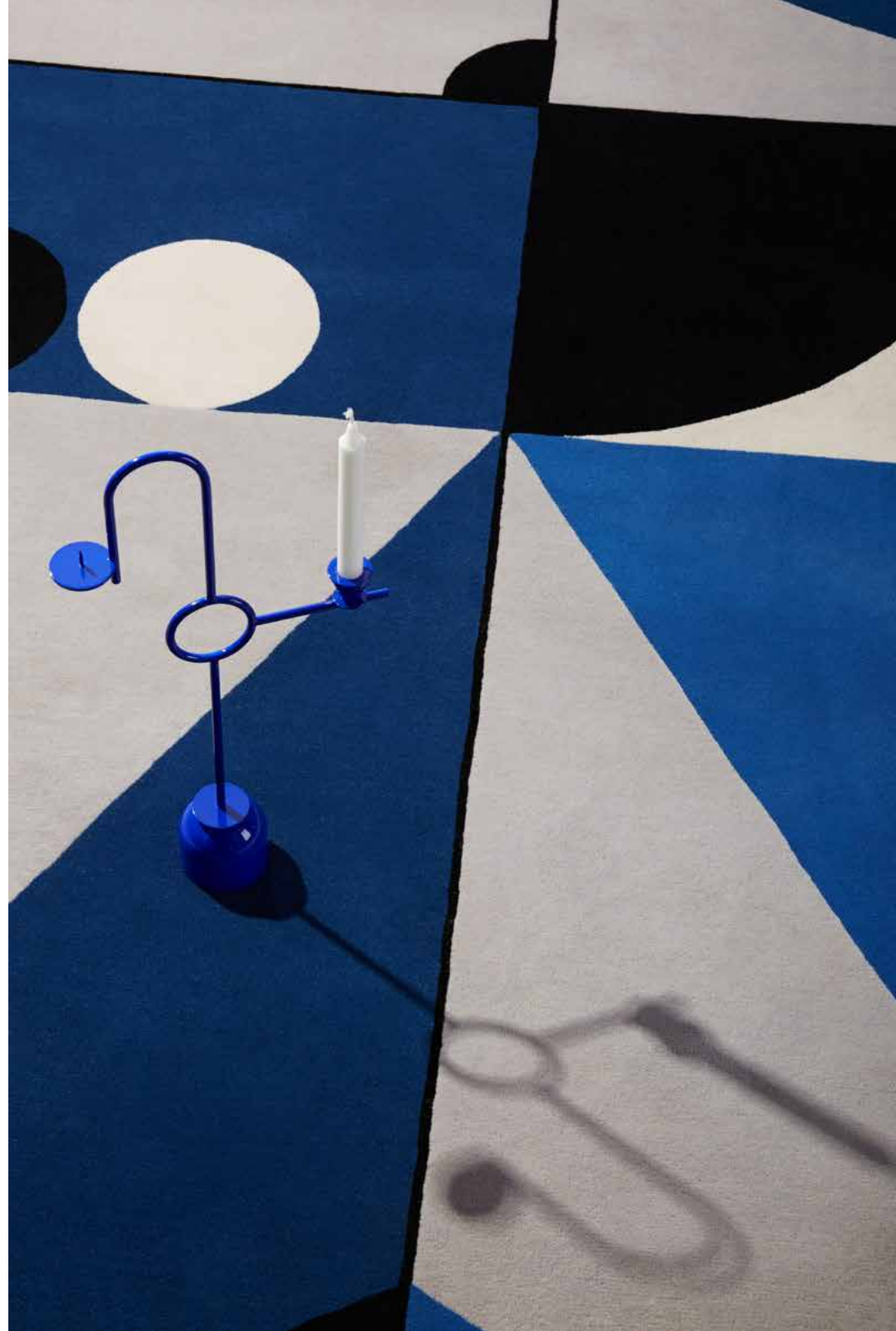


*Shanghai by Night Collection*



Shanghai by Night n°2

Rug n°2 • W170 \* D240 cm  
New-Zealand Wool



*Shanghai by Night Collection*

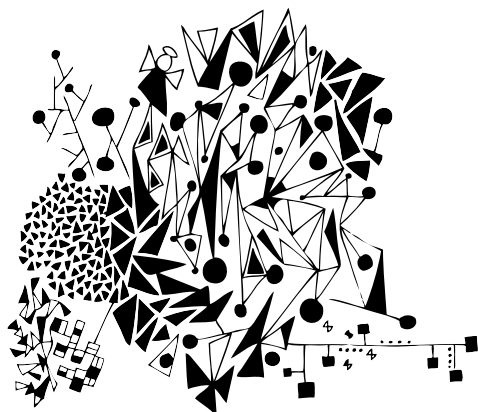


Shanghai by Night n°3

Rug n°3 • W170 \* D240 cm  
New-Zealand Wool



## *Autumn in New York Collection*



Vibrant, electric, blunt and gritty, this capsule collection – based on Sophie Dariel's illustrations - features seven pieces that bring back New York's autumn memories. While the graphic patterns of the background reflect that whatever the season the city exists in black and white to the great tunes of jazz, the rugs as well depict why the town is at its best during the cool days of autumn. Wandering through Central Park, the ginkgo trees turning bright yellow against the high blue skies, everything crisp and golden as an apple. Autumn in New York collection captures these dreamlike images. Juicy autumnal fruits, glowing foliage and explosion of colours...

A graphic answer to Billie Holiday's question "Autumn in New York, why does it seem so inviting?"

Rug n°1 • W240 \* D240 cm

Rug n°2 • W170 \* D240 cm

Rug n°3 • W170 \* D240 cm

Rug n°4 • W170 \* D240 cm

Rug n°5 • W170 \* D240 cm

Rug n°6 • W170 \* D240 cm

Rug n°7 • W170 \* D240 cm

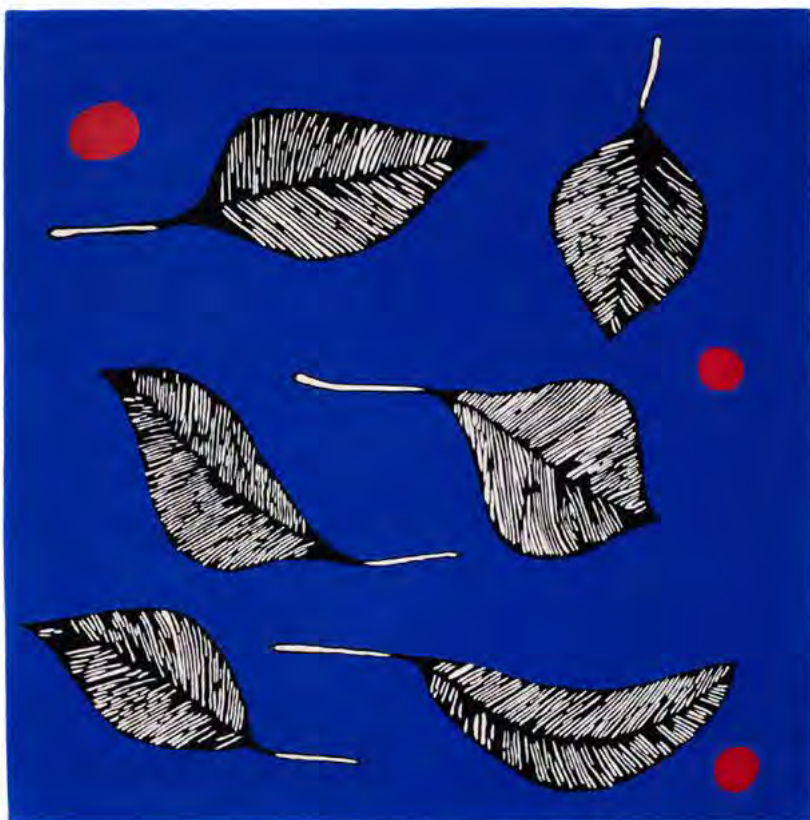
New-Zealand Wool and Tencel

||  
Notre  
tête est  
**ronde** pour  
permettre  
à la  
pensée de  
changer de  
direction. ||

*Francis Picabia*



*Autumn in New York Collection*



Autumn New York n°1

Rug n°1 • W240 \* D240 cm  
New-Zealand Wool and Tencel





*Autumn in New York Collection*



Autumn New York n°2

Rug n°2 • W170 \* D240 cm  
New-Zealand Wool and Tencel



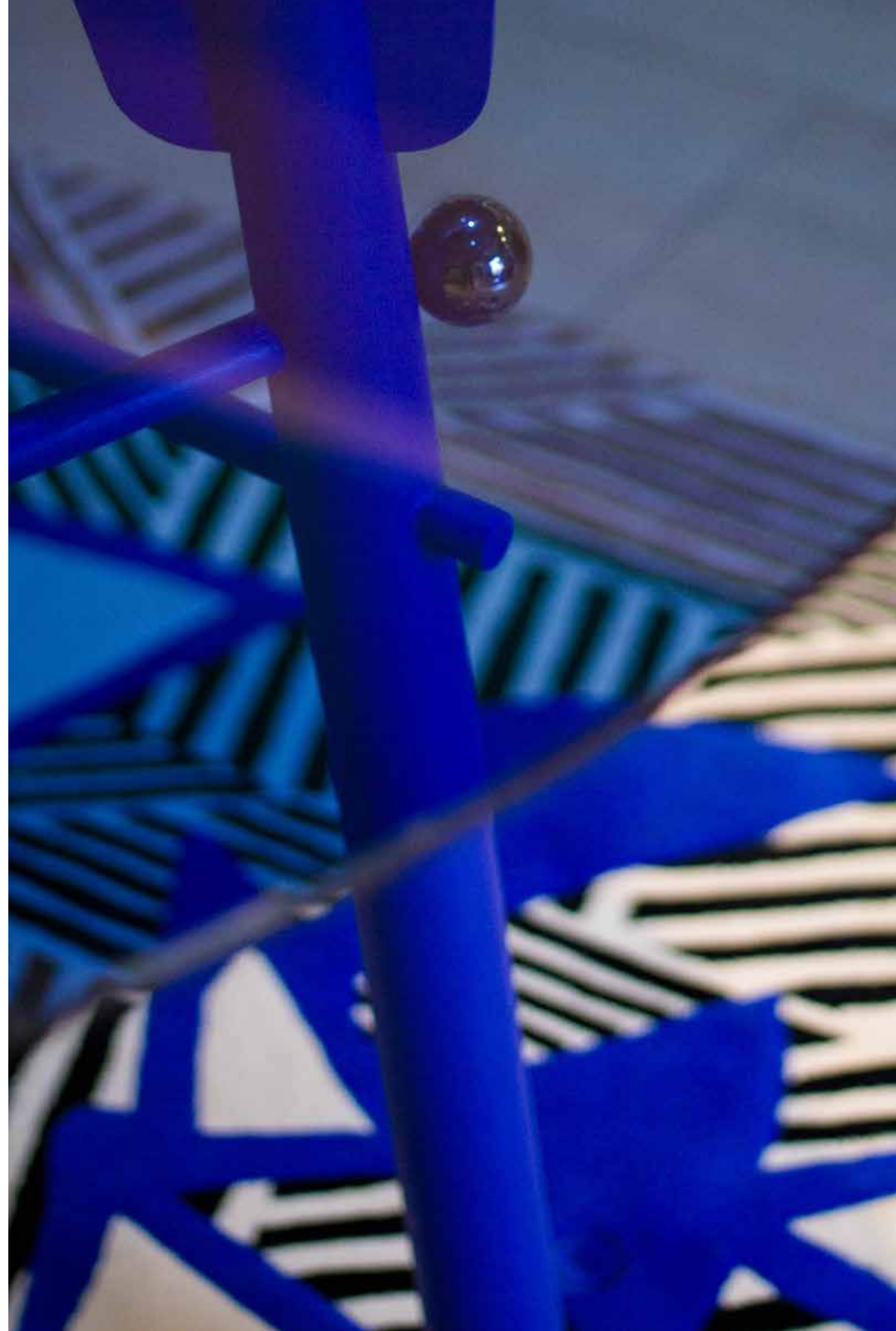


*Autumn in New York Collection*



Autumn New York n°3

Rug n°3 • W170 \* D240 cm  
New-Zealand Wool and Tencel





*Autumn in New York Collection*



*Autumn New York n°4*

Rug n°4 • W170 \* D240 cm  
New-Zealand Wool and Tencel



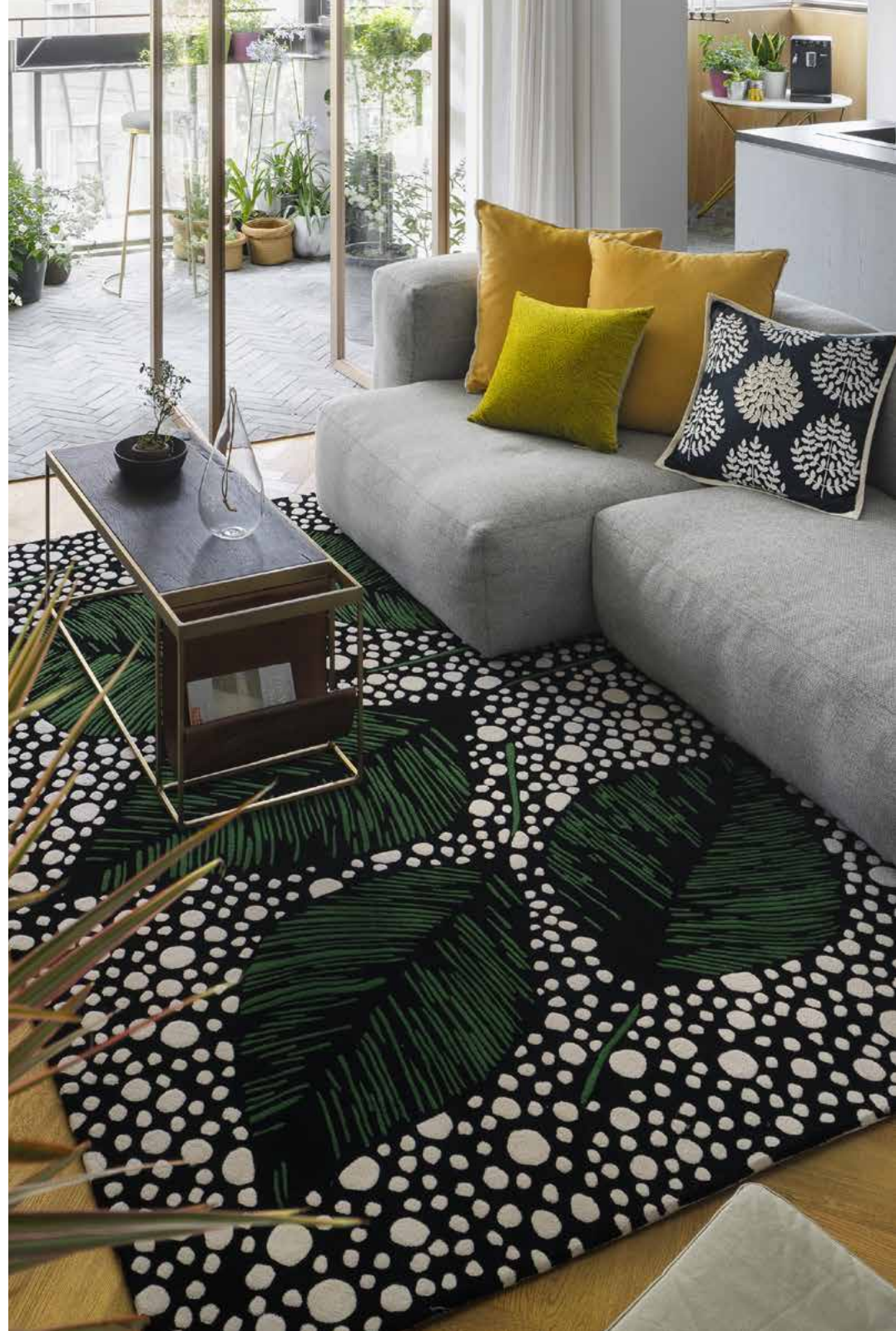


*Autumn in New York Collection*



Autumn New York n°5

Rug n°5 • W170 \* D240 cm  
New-Zealand Wool and Tencel





*Autumn in New York Collection*



Autumn New York n°6

Rug n°6 • W170 \* D240 cm  
New-Zealand Wool and Tencel





## *Autumn in New York Collection*



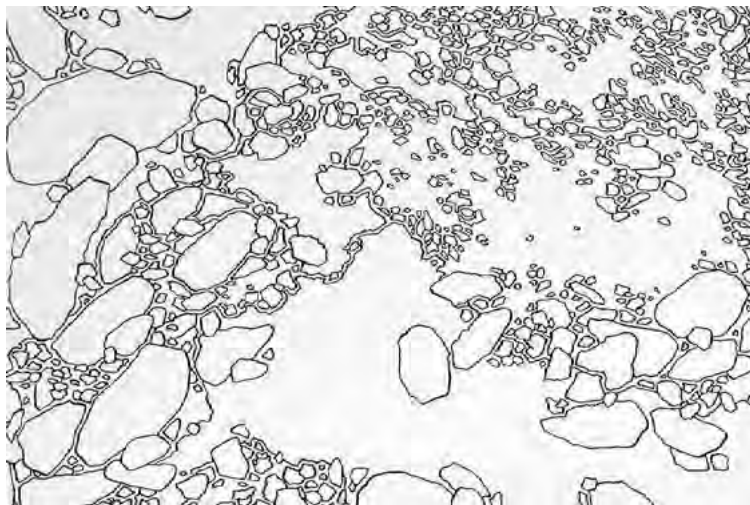
Autumn New York n°7

Rug n°7 • W170 \* D240 cm  
New-Zealand Wool and Tencel





## *Jardin de Rocaille Collection*



Jardin de Rocaille is a collection of six pieces, reinterpreted from artist Clément Vuillier's illustration series "Jardin de Rocaille". On one hand, "rocaille" echoing the art movement, is treated in the form of mineral extracts, stone flakes and marble patterns. On the other hand, "jardin" allows you to pass through large lawns with various leaves, flowers, petals and berries, creating a fantasy garden with scattering of rocks and flash of lights.

Manufactured with high-end wool and tencel, this collection of hand tufted rugs has a beautiful design and delicate texture, reflecting the pursuit of exquisite craftsmanship. The production technology of embossing, recessing and carving highlights the contrast of color and texture to the utmost, reproducing a vivid garden landscape and vitalizing the space with immortal natural elements.

Rug n°1 • W170 \* D240 cm  
Rug n°2 • W170 \* D240 cm  
Rug n°3 • W170 \* D240 cm  
New-Zealand Wool and  
Tencel

Rug n°5 • W170 \* D240 cm  
Rug n°6 • W170 \* D240 cm  
Rug n°7 • W170 \* D240 cm  
New-Zealand Wool and  
Tencel



**Artist Clément Vuillier**



*Jardin de Rocaille Collection*



*Jardin de Rocaille n°1*

Rug n°1 • W170 \* D240 cm  
New-Zealand Wool and Tencel





*Jardin de Rocaille Collection*



Jardin de Rocaille n°2

Rug n°2 • W170 \* D240 cm  
New-Zealand Wool and Tencel





## *Jardin de Rocaille Collection*



Jardin de Rocaille n°3

Rug n°3 • W170 \* D240 cm  
New-Zealand Wool and Tencel





*Jardin de Rocaille Collection*



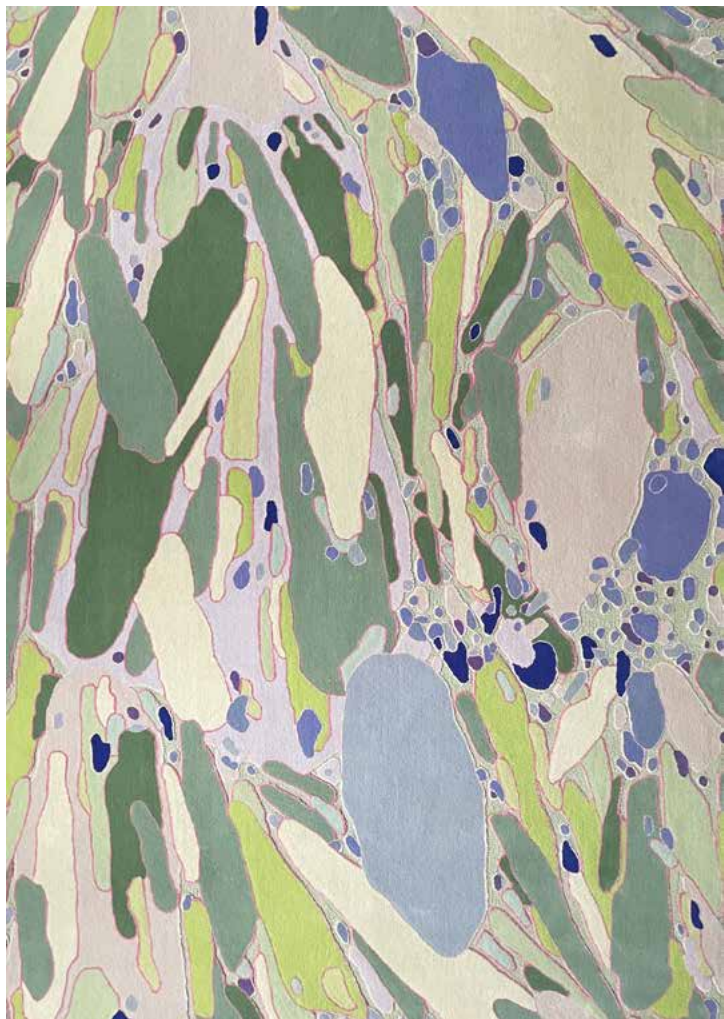
Jardin de Rocaille n°5

Rug n°5 • W170 \* D240 cm  
New-Zealand Wool and Tencel



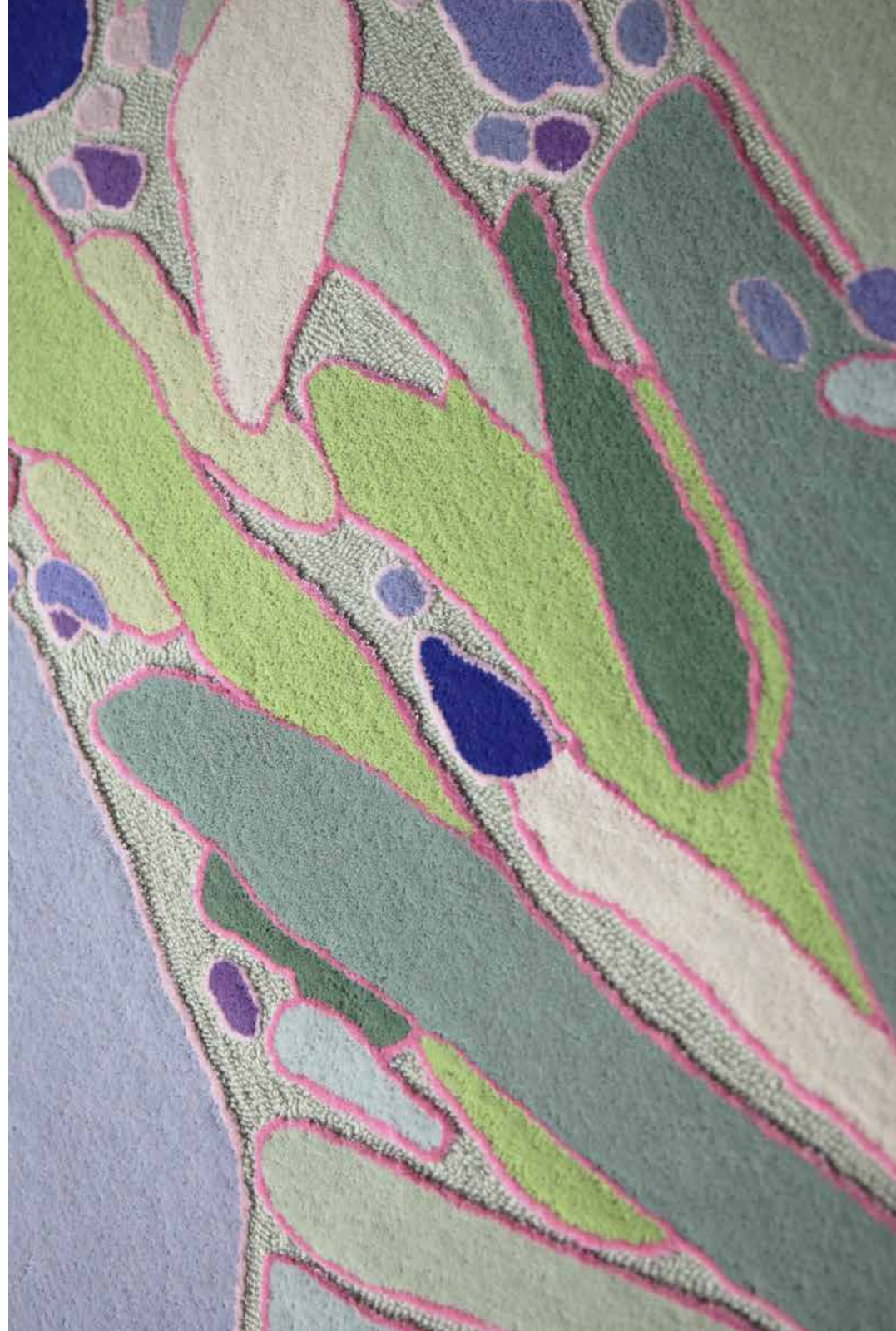


*Jardin de Rocaille Collection*



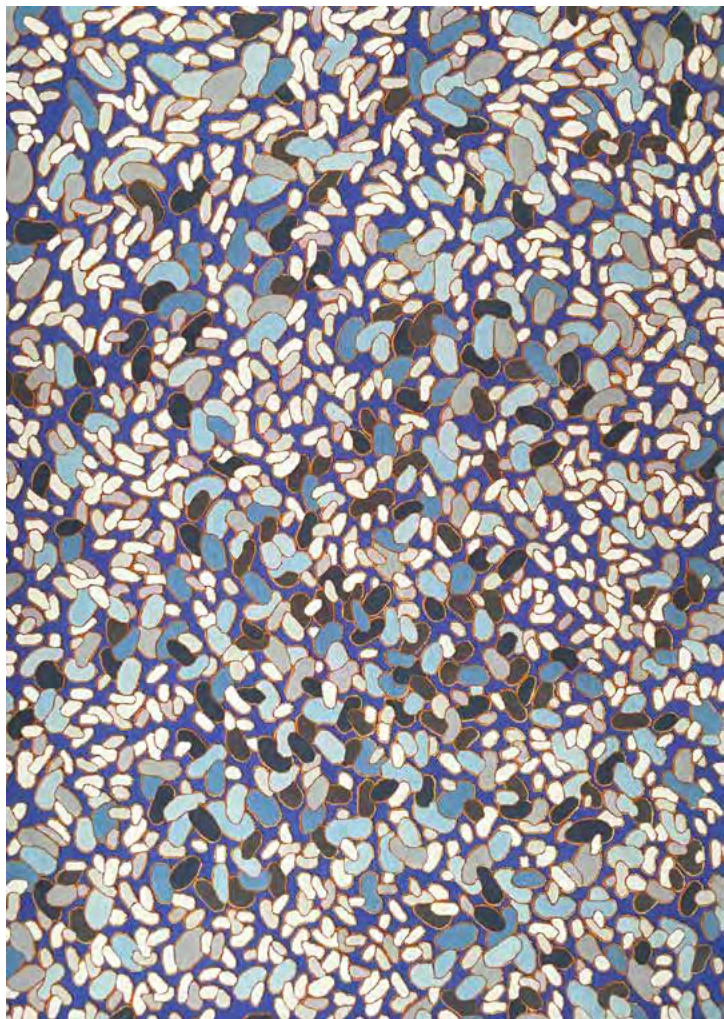
Jardin de Rocaille n°6

Rug n°6 • W170 \* D240 cm  
New-Zealand Wool and Tencel



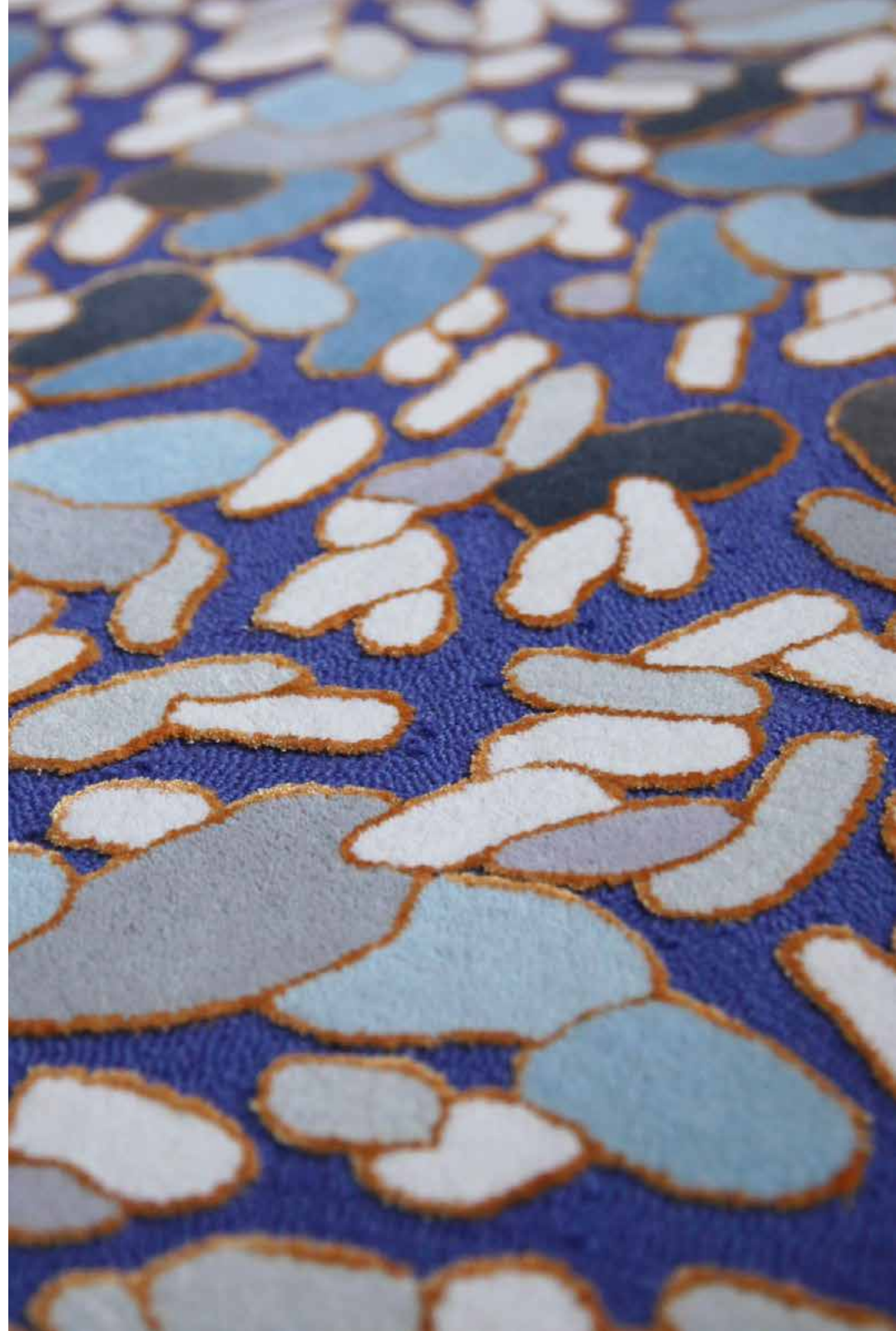


*Jardin de Rocaille Collection*



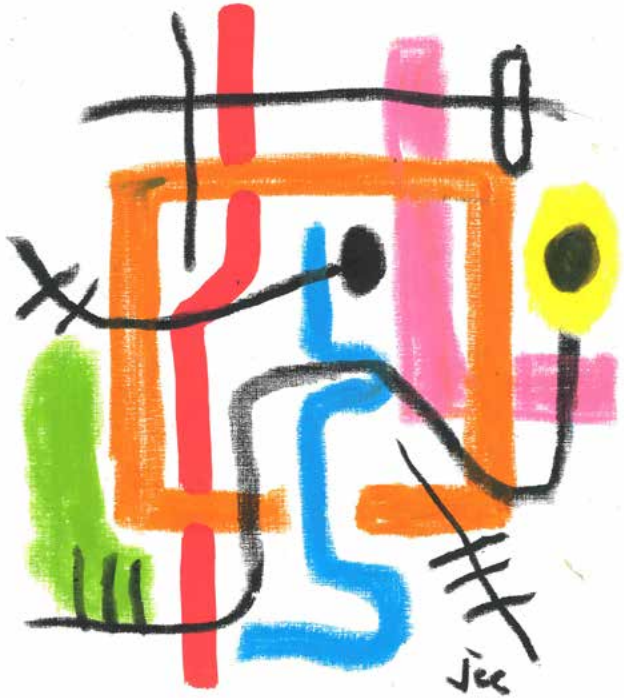
Jardin de Rocaille n°7

Rug n°7 • W170 \* D240 cm  
New-Zealand Wool and Tencel





*Mise en Seine Collection*



*Design by Jean-Charles de Castelbajac*

Rug n°1 • W240 \* D240 cm

Rug n°2 • W240 \* D240 cm

Rug n°3 • W170 \* D240 cm

Rug n°4 • W170 \* D240 cm

New-Zealand Wool



*Mise en Seine Collection*



N°1 - Candy Darling

Rug n°1 • W240 \* D240 cm  
New-Zealand Wool





*Mise en Seine Collection*



N°2 - Emotional Traffic

Rug n°2 • W240 \* D240 cm  
New-Zealand Wool



*Mise en Seine Collection*



N°3 - Color Wave

Rug n°3 • W170 \* D240 cm  
New-Zealand Wool





*Mise en Seine Collection*



N° 4 - Mano Chrome

Rug n°4 • W170 \* D240 cm  
New-Zealand Wool





## **TO MAKE A DADAIST POEM**

*Take a newspaper.*

*Take some scissors.*

*Choose from this paper an article of the length you want to make your poem.*

*Cut out the article.*

*Next carefully cut out each of the words that makes up this article and put them all in a bag.*

*Shake gently.*

*Next take out each cutting one after the other.*

*Copy conscientiously in the order in which they left the bag.*

*The poem will resemble you.*

*And there you are – an infinitely original author of charming sensibility, even though unappreciated by the vulgar herd.*

**Tristan Tzara**

### **CREDITS**

© Maison Dada collection and Founder Portrait  
Photos by Derryck Menere, David Cohen Corval, Zhu Hai, Karine Lee,  
Yunpu Cai, Susan Tan, Kevin Kang, Li Dandan and Yvonne Sann.





**PARIS SHOWROOM**

*101, Rue du Bac*

*75007 Paris - France*

*+33 (0)9 80 96 24 94*

*contact@maisondada.com*

**SHANGHAI SHOWROOM**

*621 Changde Road,*

*200040, Shanghai - China*

*+86 (0)21 3212 5796*

*contact@maisondada.com*

**PRESS RELATIONS**

*General Inquiries:*

*pr@maisondada.com*

***www.maisondada.com***